


17TH ANNUAL CONFERENCE OF THE
BRITISH HIV ASSOCIATION (BHIVA)

British HIV Association
BHIVA

Miss Tania Wan
Imperial College London

6-8 April 2011, Bournemouth International Centre

Imperial College
London



**Health outcomes for young adults
with perinatally acquired HIV-1 infection
following transfer to adult services**

Tania Wan, Medical Student, Imperial College London
Sarah Fidler, Susan McDonald & Caroline Foster

Background

Ageing perinatal cohort

- **Globally**
 - 2.1 million children <15 yrs
- **UK Collaborative HIV Paediatric Study (CHIPS)**
March 2010:
 - 1,645 children
 - 65% age 10+
 - 262 transferred to adult care

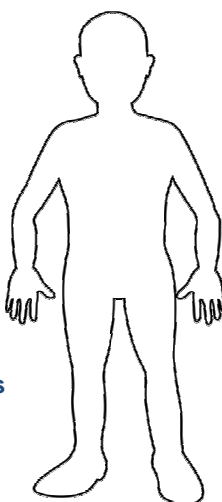


Long-term outcomes are uncertain

Neurocognitive [Ashby, 2011]
Complex psychological needs
[Frize, 2011]

Bone: 83% vitamin D
deficiency
Reduced bone mass density

Reproductive health outcomes
[Croucher, 2011]



Poor adherence to ART

Cardiovascular risks:
Lipid abnormalities
Increased carotid intimal
thickness
Thrombophilia

Aim

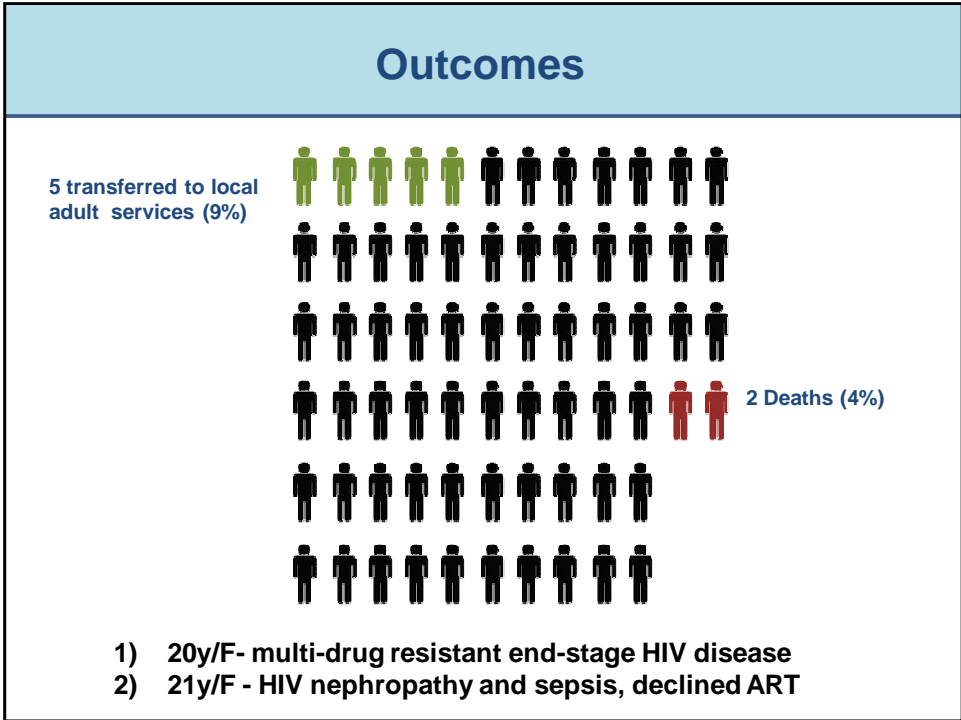
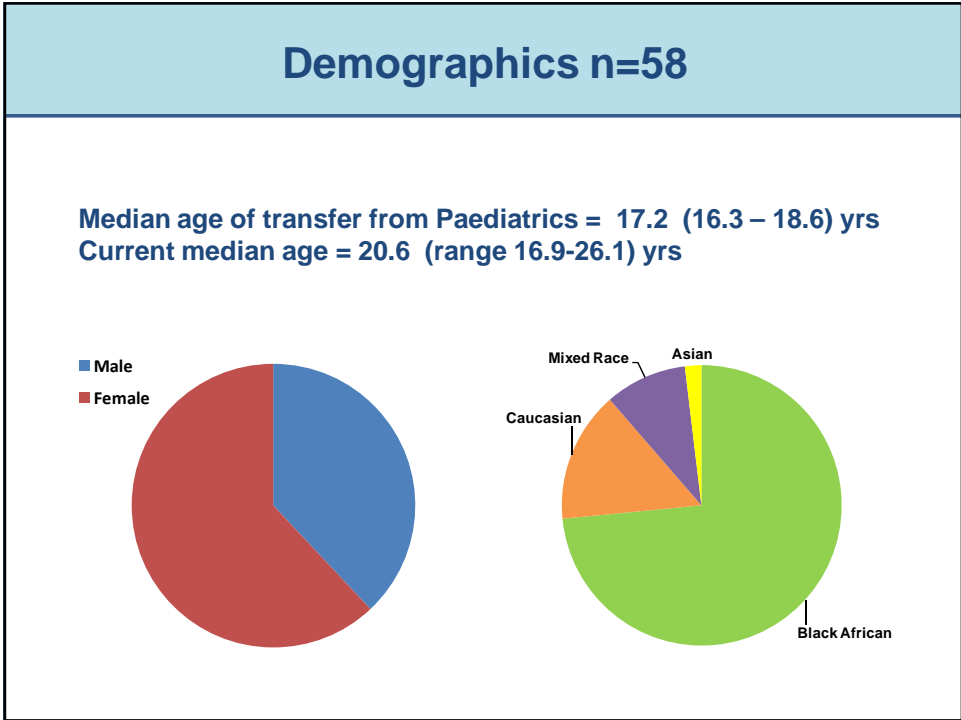
To examine health outcomes of n = 58 young people with perinatally acquired HIV infection in adult care at a single UK centre

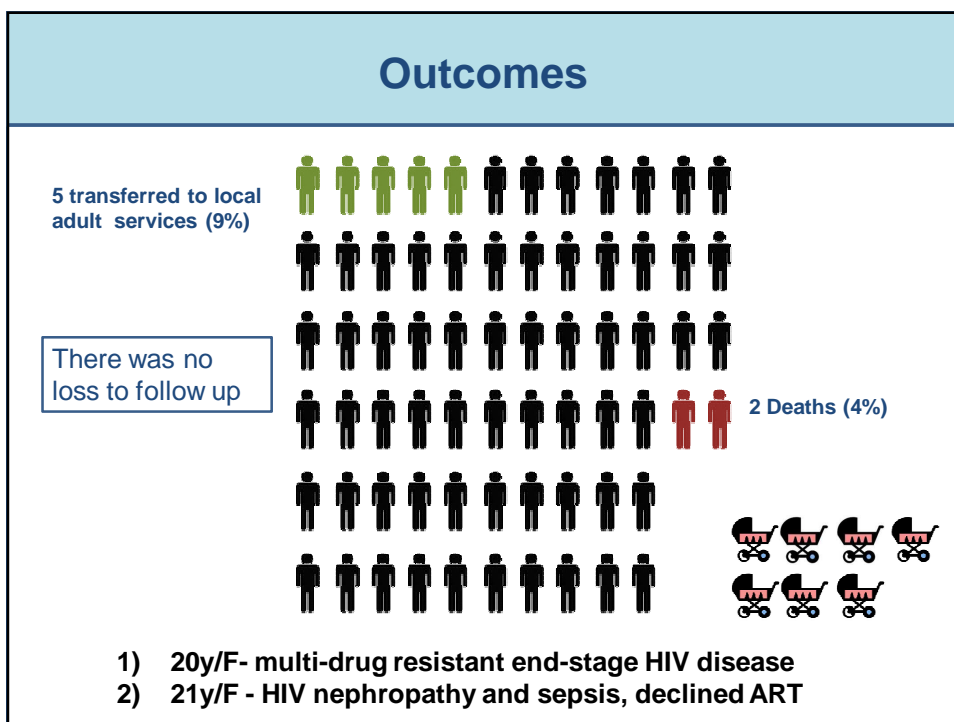
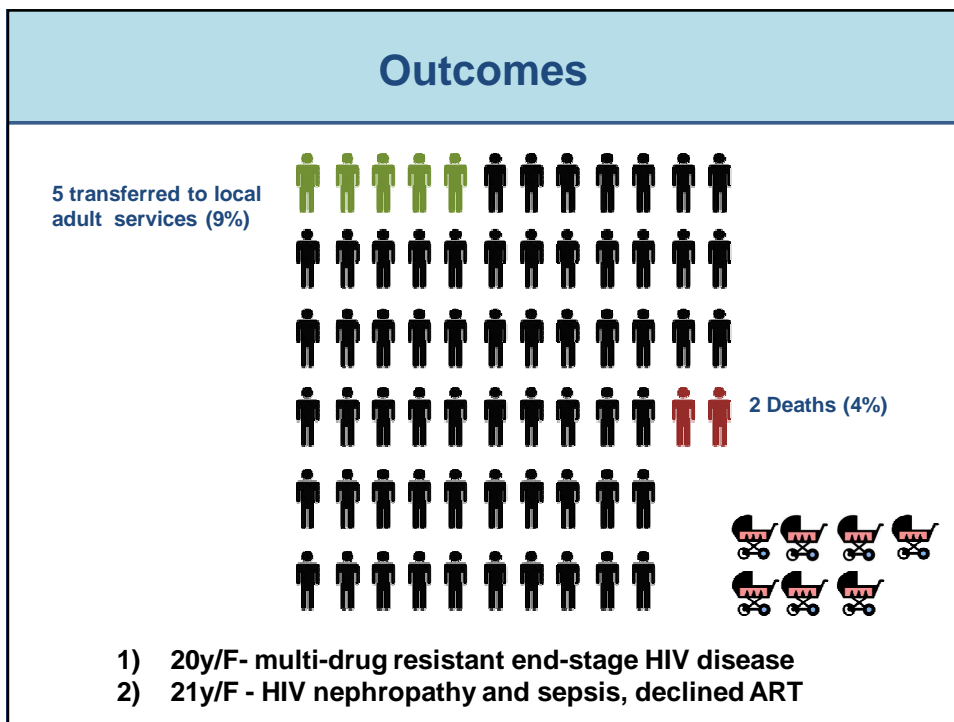
Methods

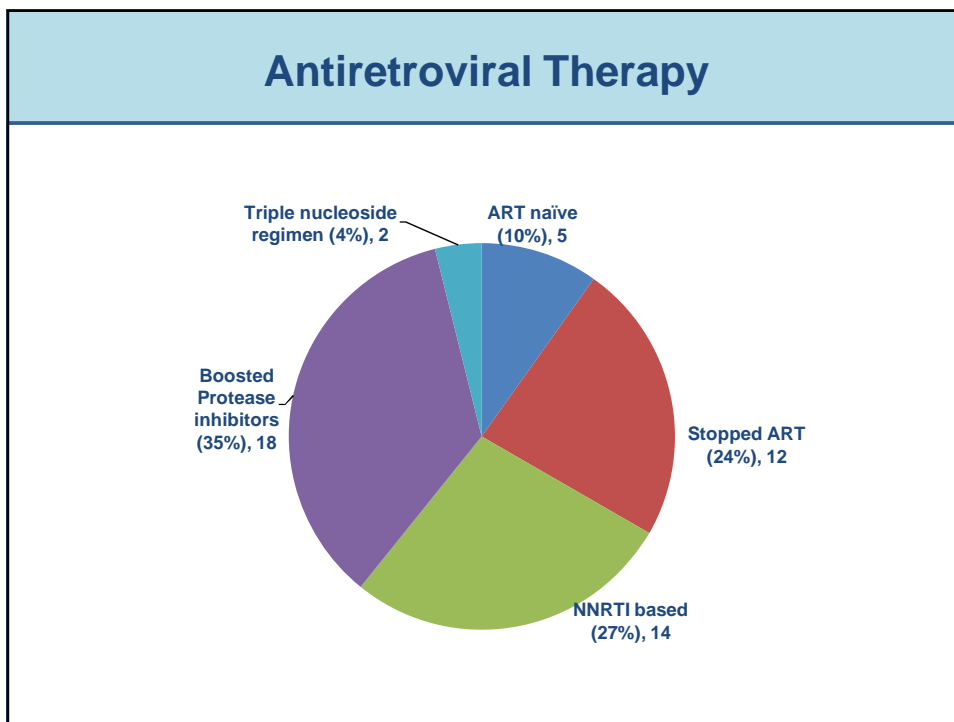
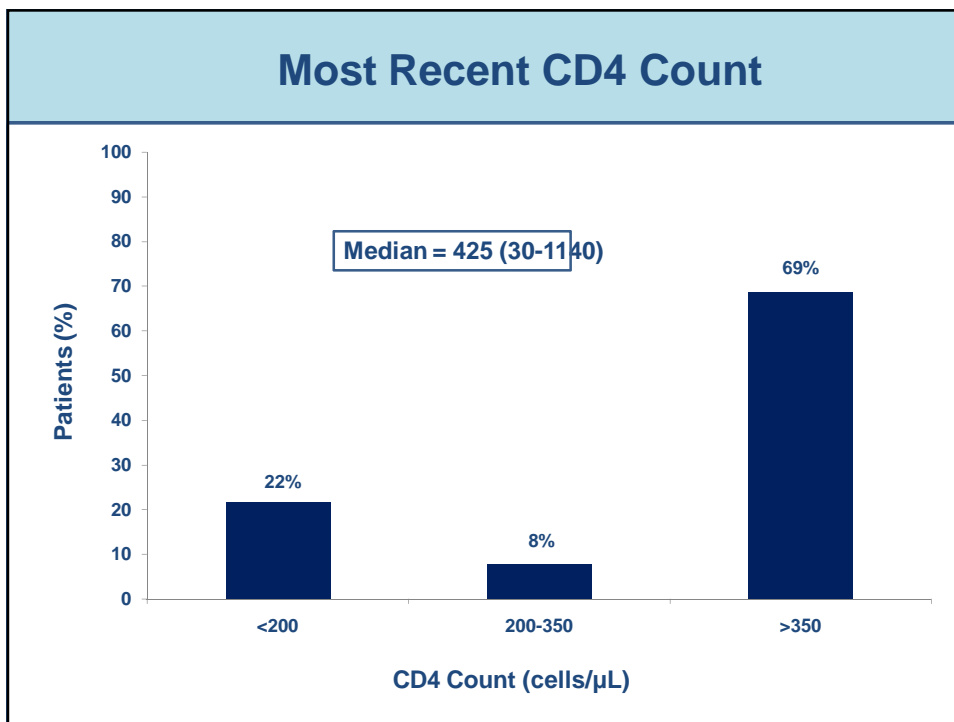
Retrospective case note review of all paHIV young people seen in the 900 clinic between Jan 2006-2011

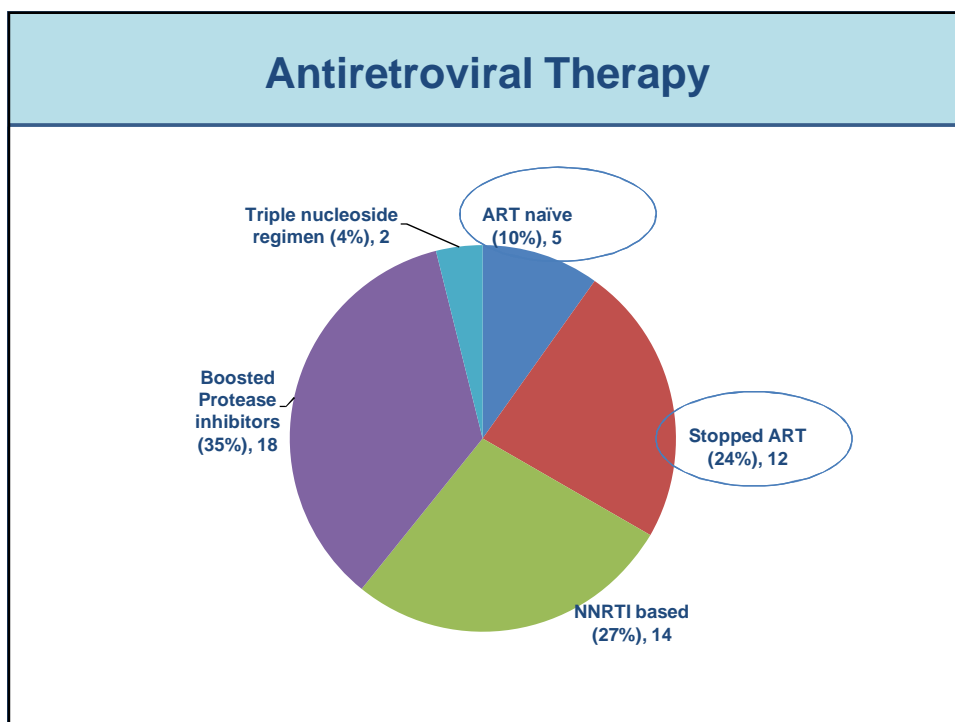
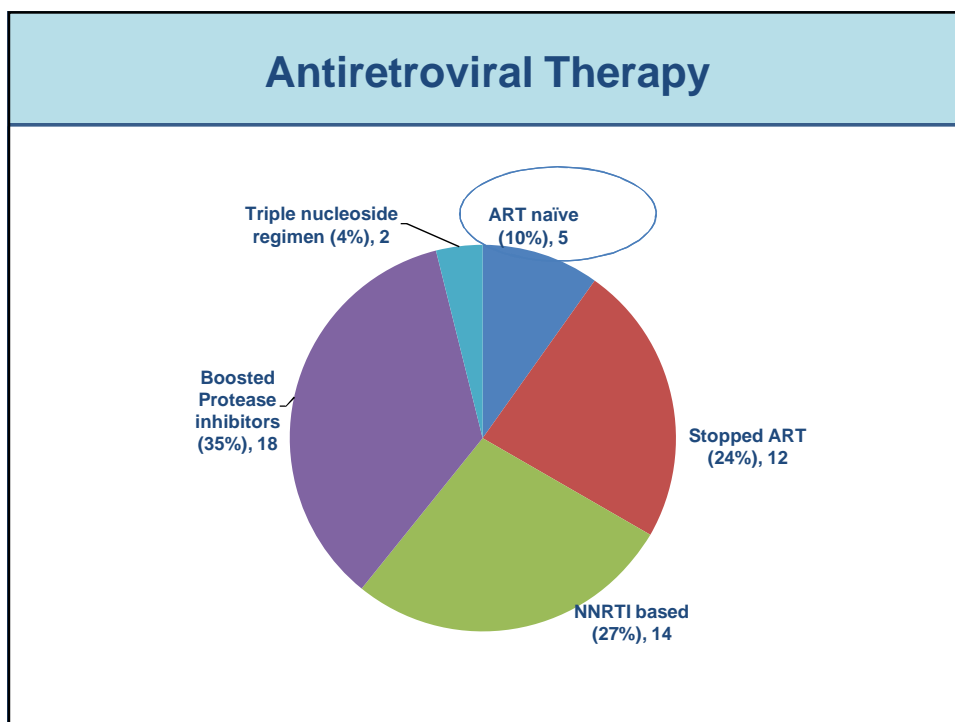
Measured Outcomes:

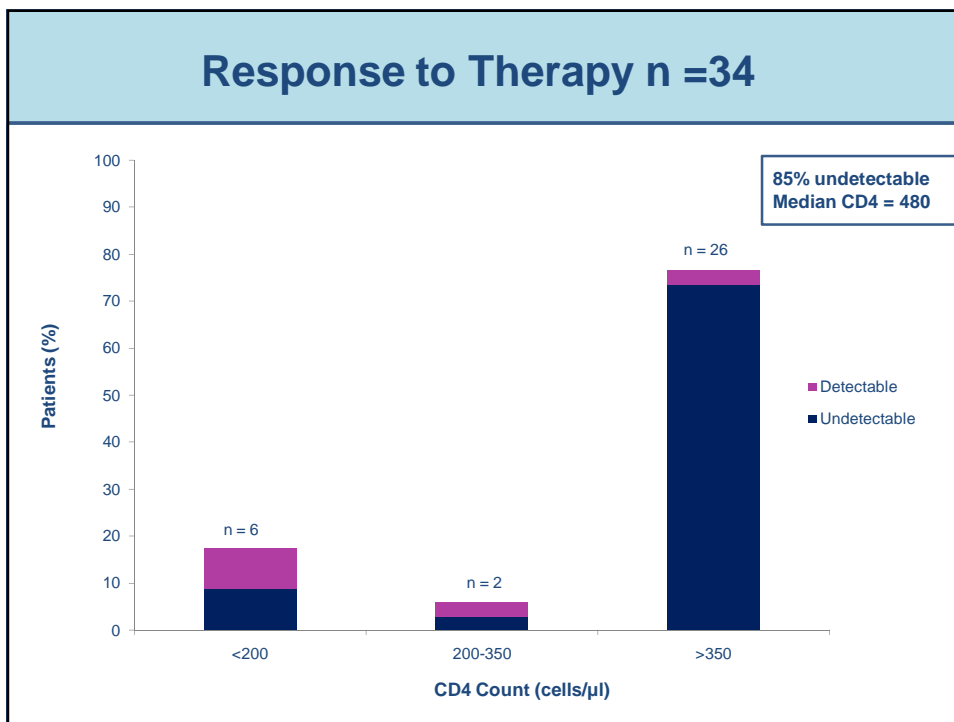
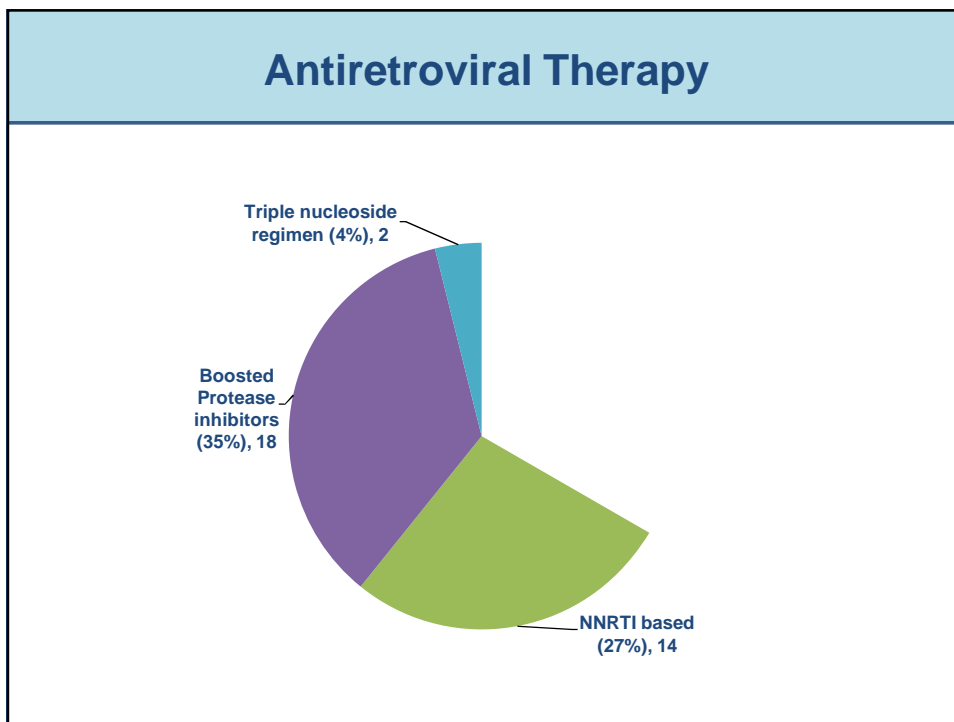
- Demographics
- ART history
- Current CD4 Count, viral load (pVL)
- Attendance and loss to follow up
- Inpatient admissions
- Mortality
- Lipodystrophy requiring intervention
- Mental health diagnoses, overdose, antidepressant use











Complications of Disease and Treatment

Adherence [McDonald, 2011; Kent, 2011]

- 2 patients have gastrostomies to enhance adherence

Treatment

- 6/51(12%) have severe lipodystrophy
 - 5 requiring surgery
 - 1 injectable fillers

Mental Health [Frize, BHIVA, 2011]

- 4 patients- intentional overdoses requiring admission
- 7/51 (14%) have ever been prescribed antidepressants

Hospital Admissions

- 13/51 (25%) have been admitted to adult inpatient services
- Median duration 9 (3-133) days

- 2 proven opportunistic infections (PCP, MAI)
- 4 were admitted following overdoses
- 1 CVA + osteonecrosis

Conclusions - Two decades of living with HIV

- One in 5 has severe immunosuppression (CD4 <200)
- One in 4 required hospital admission
- 2/58 died
- High rates of co-morbidity; lipodystrophy and depression
- Despite attending for MDT follow up there is a small group of young people who remain off ART with low CD4 counts
- But not all bad news:
85 % of those who take ART are undetectable

Thank you

- To all the young people from the 900 clinic
- BHIVA
- CHIPS
- 900 Clinic multi-disciplinary team
- Jane Ashby

