

17TH ANNUAL CONFERENCE OF THE
BRITISH HIV ASSOCIATION (BHIVA)

British HIV Association
BHIVA

Dr Helen Williams
Guy's and St Thomas' NHs Foundation Trust, London

6-8 April 2011, Bournemouth International Centre

O32 17th Annual Conference of the British HIV Association
(BHIVA) 6-8 April 2011, Bournemouth, UK

**Co-morbidity and Late
Presentation – Findings from an
over 50s cohort**

Helen Williams¹, Fiona Makia¹, Matthew
Bennett², David Eldred-Evans², Charles
Godavitarne², Nyati Lobo², Sheena Castelino¹,
Nick Larbalestier¹, Ranjababu Kulasegaram¹

1. Harrison Wing, Guy's and St Thomas' NHS Foundation Trust, London, UK
2. King's College London School of Medicine, London, UK

Background



- * The number and proportion of HIV positive patients aged over 50 attending for care in the UK is increasing¹
- * HIV patients over 50 accessing care more than tripled between 2000-2009 from 2,432 to 12,063
- * Represent 1 in 5 adults presenting for HIV care
- * Previous cohort data shows increased incidence of co morbidities in this group including diabetes, hyperlipidaemia, cardiovascular and bone disease^{2, 3}

1. HPA data 2010
2. P792 B Hasse *et al* 18th Conference on Retroviruses and Opportunistic Infections, Boston, US 2001
3. NF Onen *et al* HIV Clin Trials 2010 11(2):100-9

Aims



- * To describe our HIV patients currently aged over 50
 - * Demographics
 - * Characteristics at time of HIV diagnosis
 - * Co-morbidities

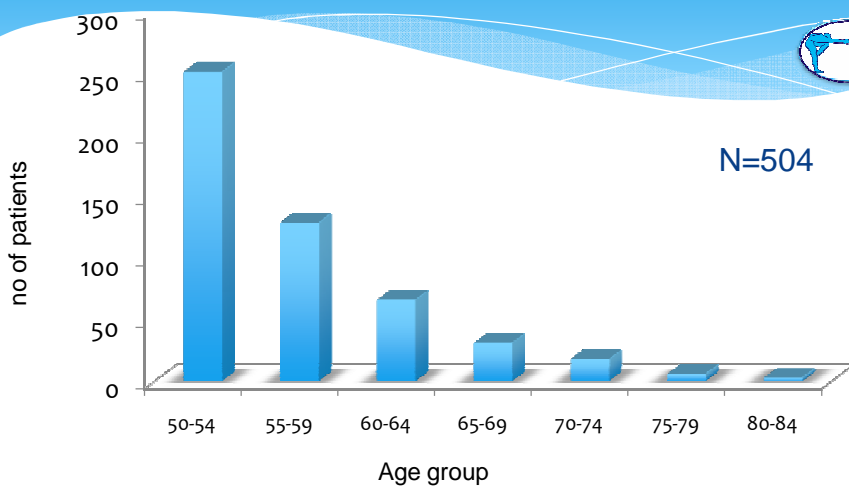
Demographics

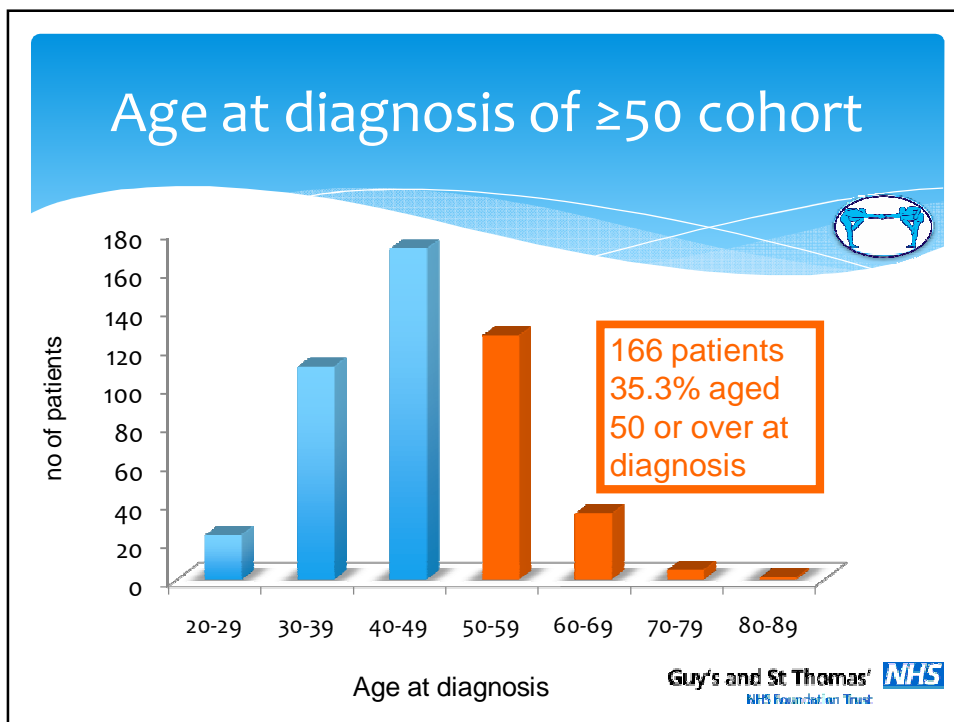
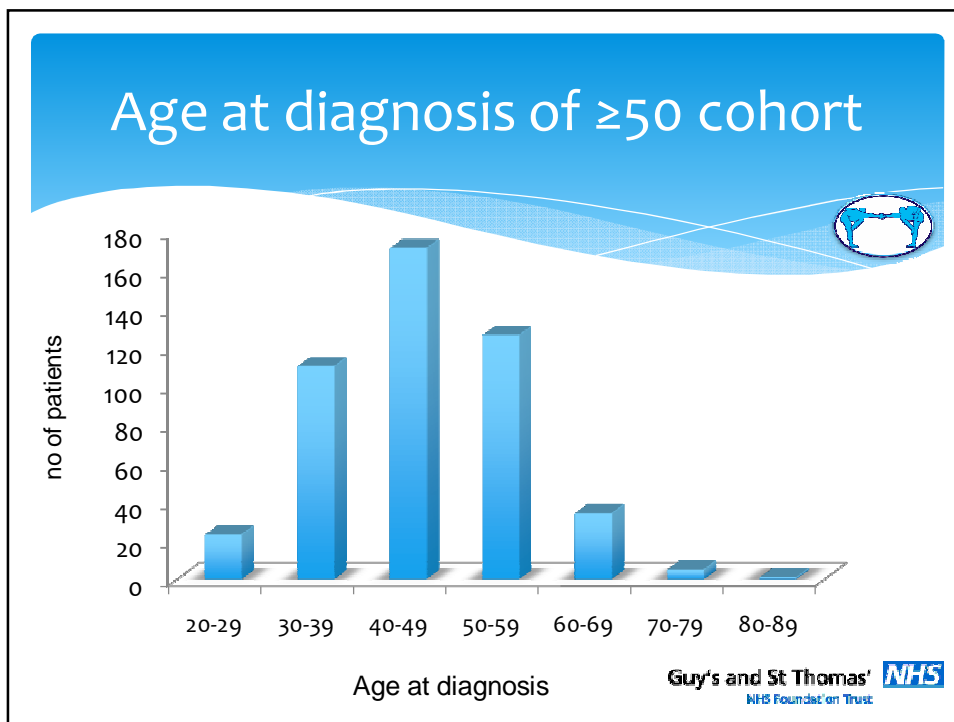
**N= 504 patients aged over 50 years
on 01/12/10 from total cohort of 2700**

Current Age	Median = 54 years	Range 50-83 years IQR 52-59 years
Male	N= 385	76.4%
White Ethnicity	N= 276	54.8%
Black ethnicity (including Black African, Caribbean and Other)	N=193	38.3%
MSM	N= 239	47.4%
Age at HIV diagnosis	Median = 46	Range 22-82 IQR 40-52
Time since diagnosis (n=470)	Median = 9 years	Range <1-28 years IQR 5-14 years

Including changes to data since abstract submission

Age group distribution in patients ≥ 50

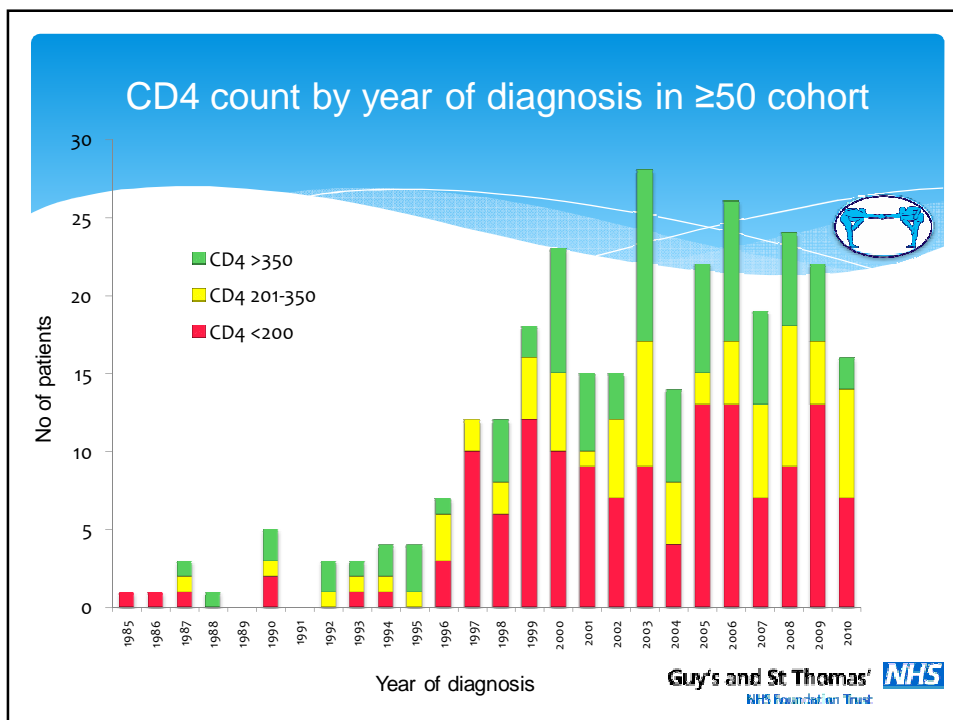


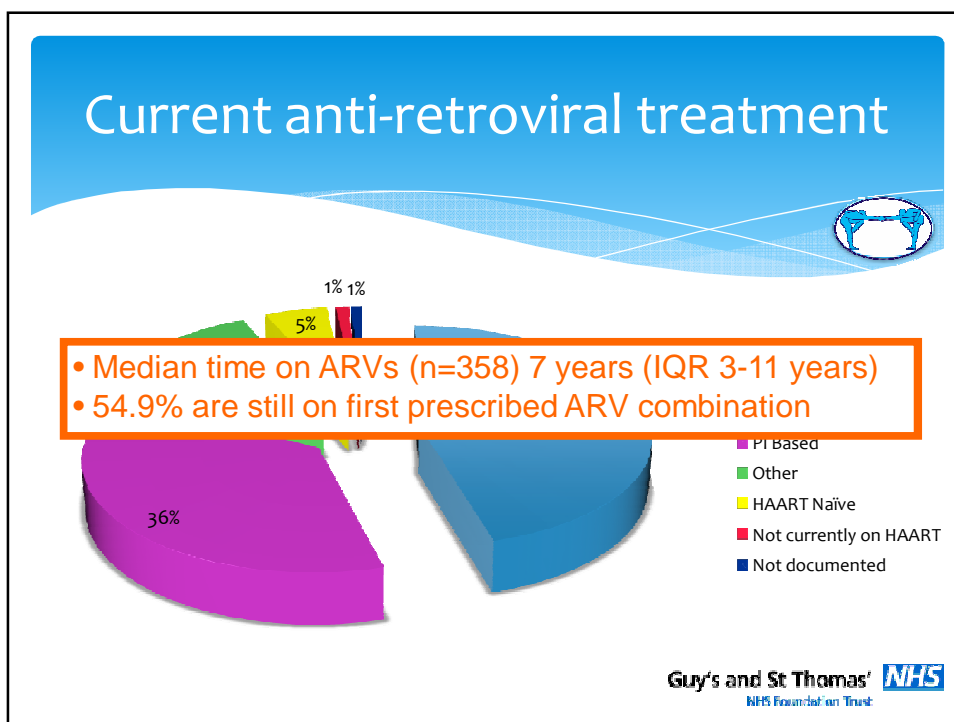
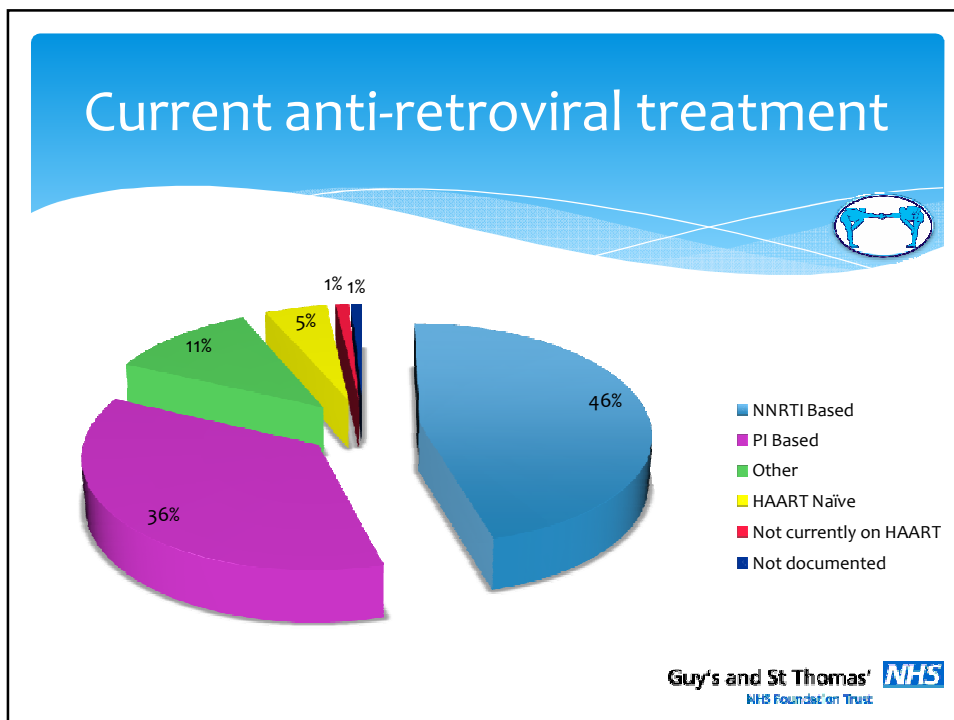


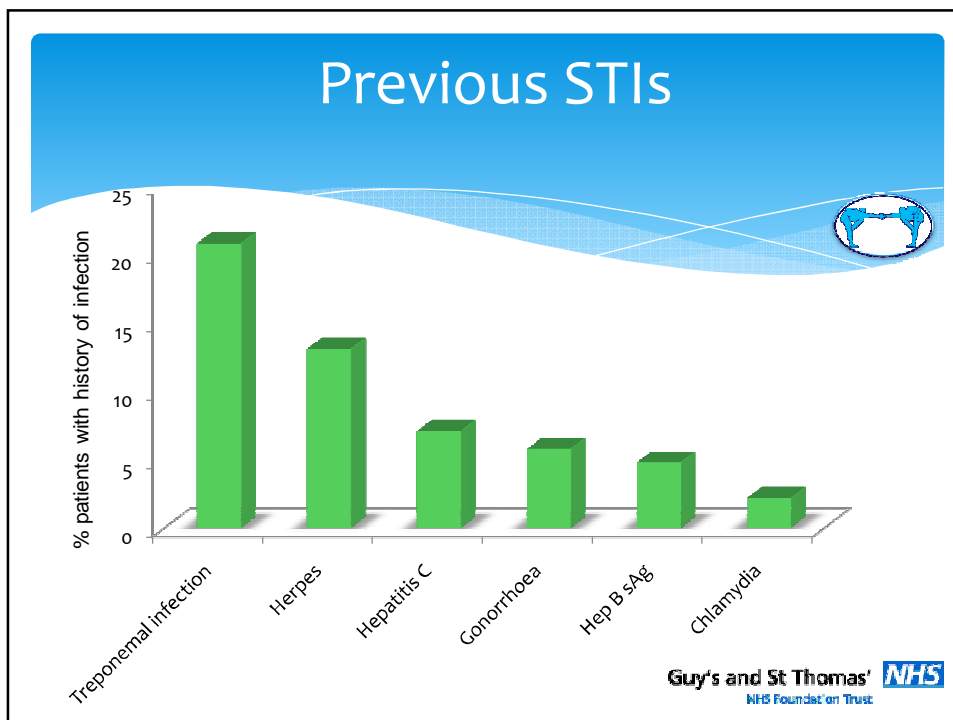
CD4 at Diagnosis

n=298

CD4 at diagnosis	Median = 216 cells/mm ³	Range 3-1100 cells/mm ³ IQR 79-401 cells/mm ³
<350 cells/mm ³	N= 211 106 patients <50 at diagnosis 105 patients >50 at diagnosis	70.8% 50.2% <50 49.8% >50
201-350 cells/mm ³	N= 72 35 patients <50 at diagnosis 37 patients >50 at diagnosis	24.2% 48.6% <50 51.4% >50
<200 cells/mm ³	N=139 71 patients <50 at diagnosis 68 patients >50 at diagnosis	46.6% 51.1% <50 48.9% >50







Cardiovascular Health

Median 10yr Framingham Cardiovascular risk score		12.3%
Hyperlipidaemia and /or on statin /other lipid lowering agent		44%
Current Smokers		15.7%
Diabetes		11.3%
Documented cardiovascular event	N=37 7 Myocardial Infarctions 6 CVAs or TIAs 8 Positive coronary angiograms / PCI	7.3%
Of these 37 patients	6 Current smokers 29 Currently on statins 5 Diabetes	16% 78.4% 13.5%

Bone Health

Numbers of patients aged over 50 (n=504) who had DEXA scan	134	26.6%
Number of patients with DEXA results showing reduced bone mineral density (n=134)	70	52.2%
Of these (n=70)	22/134 have osteoporosis 48/134 have osteopenia 8 Current smokers 6 Concurrent renal disease	16.4 % 35.8 % 11.4 % 8.6 %

Renal Health

Numbers of patients aged over 50 (n=504) with documented renal disease	39	7.7%
Of these (n=39)	8 Currently on dialysis	20.5%
	6 Documented HIVAN	15.4%
	4 Diabetes	10.3%

Mental Health and Memory

Numbers of patients aged over 50 (n=504) with documented mental health illness	154	30.6%
Of these 154, depression cited in	104	67.5%
Numbers of patients aged over 50 (n=504) with documented memory impairment	41	8.1%

Discussion



- * 41.9% of our patients aged over 50 presented with a CD4 count of <350 cells/mm³
- * 35.3% of the whole group were aged 50 or over at HIV diagnosis
- * This group have multiple co-morbidities affecting cardiovascular, renal, bone and mental health
- * Future work will compare this group with
 - * HIV positive patients under 50
 - * HIV negative patients over 50

Acknowledgements



Co-Authors

John White, Alastair Teague and Anatole Menon-Johansson

Staff and patients of the Harrison Wing, St Thomas' Hospital