



Third Joint Conference  
of the  
British HIV Association (BHIVA)  
with the  
British Association for Sexual Health and HIV (BASHH)

**1–4 April 2014**

Arena and Convention Centre · Liverpool

THIRD JOINT CONFERENCE  
OF BHIVA AND BASHH 2014



Professor Jane Anderson  
Homerton University Hospital, London

# THIRD JOINT CONFERENCE OF BHIVA AND BASHH 2014



## Professor Jane Anderson

Homerton University Hospital, London

COMPETING INTEREST OF FINANCIAL VALUE $\geq$ £1,000:	
Speaker Name	Statement
Prof Jane Anderson	In the past 12 months Jane Anderson has been in receipt of fees for consultancy, educational activities, research and project funding from Gilead Sciences, MSD, Jansen, ViiV, Abbot, and Bristol Myers Squibb
Date	April 2014

# Making the most of it

## Notes and Queries on a career in Medicine

Jane Anderson  
janderson@nhs.net  
@profjanderson

# The Basics

Somewhere to live

Someone to love

Something to do and to look forward to

# Don't settle.....

“Your work is going to fill a large part of your life, and the only way to be truly satisfied is to do what you believe is great work.

And the only way to do great work is to love what you do.

If you haven't found it yet, keep looking.

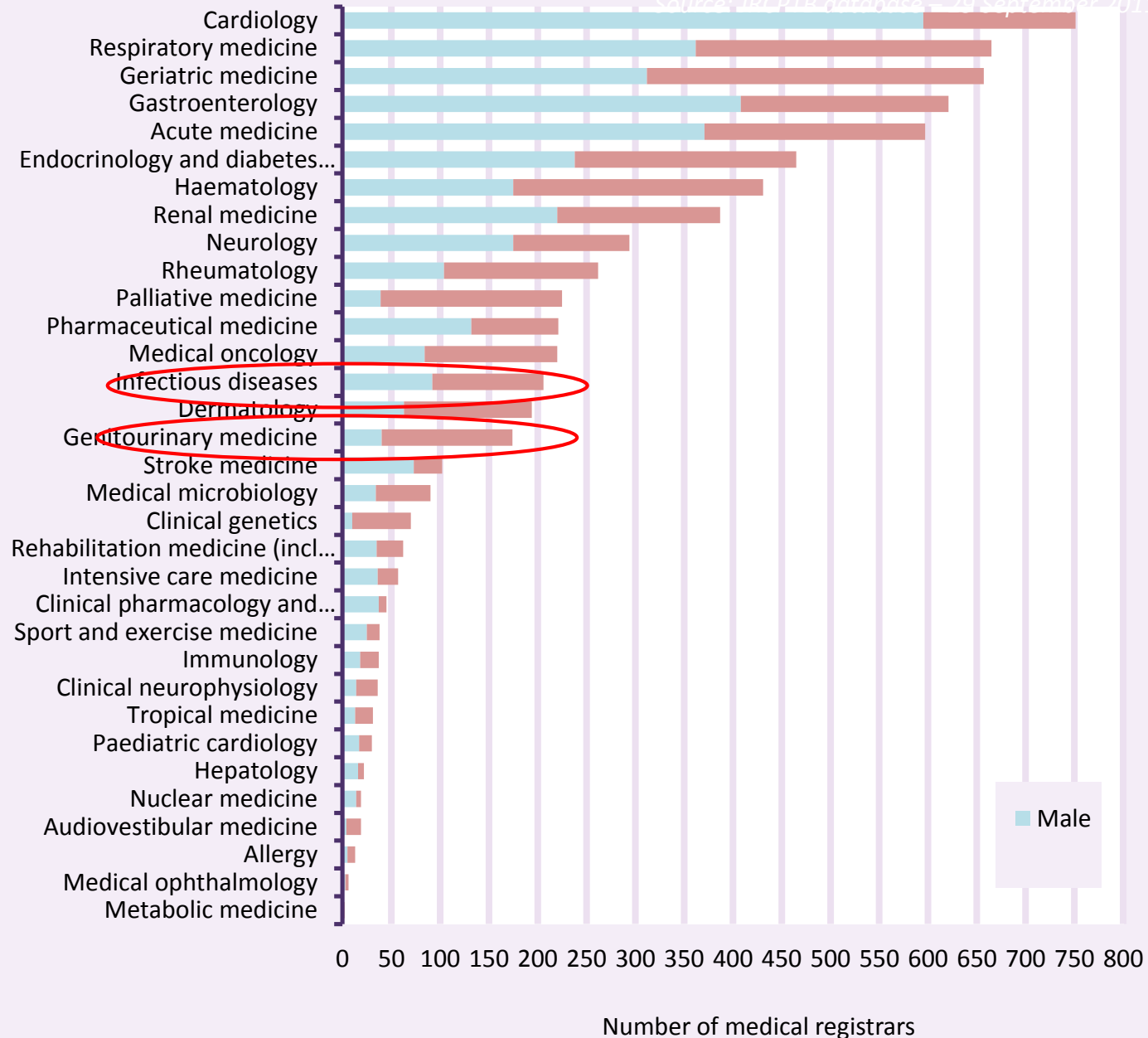
Don't settle”.

Steve Jobs



# Gender of the **medical registrar** workforce in the **medical** specialties UK – all medical specialties

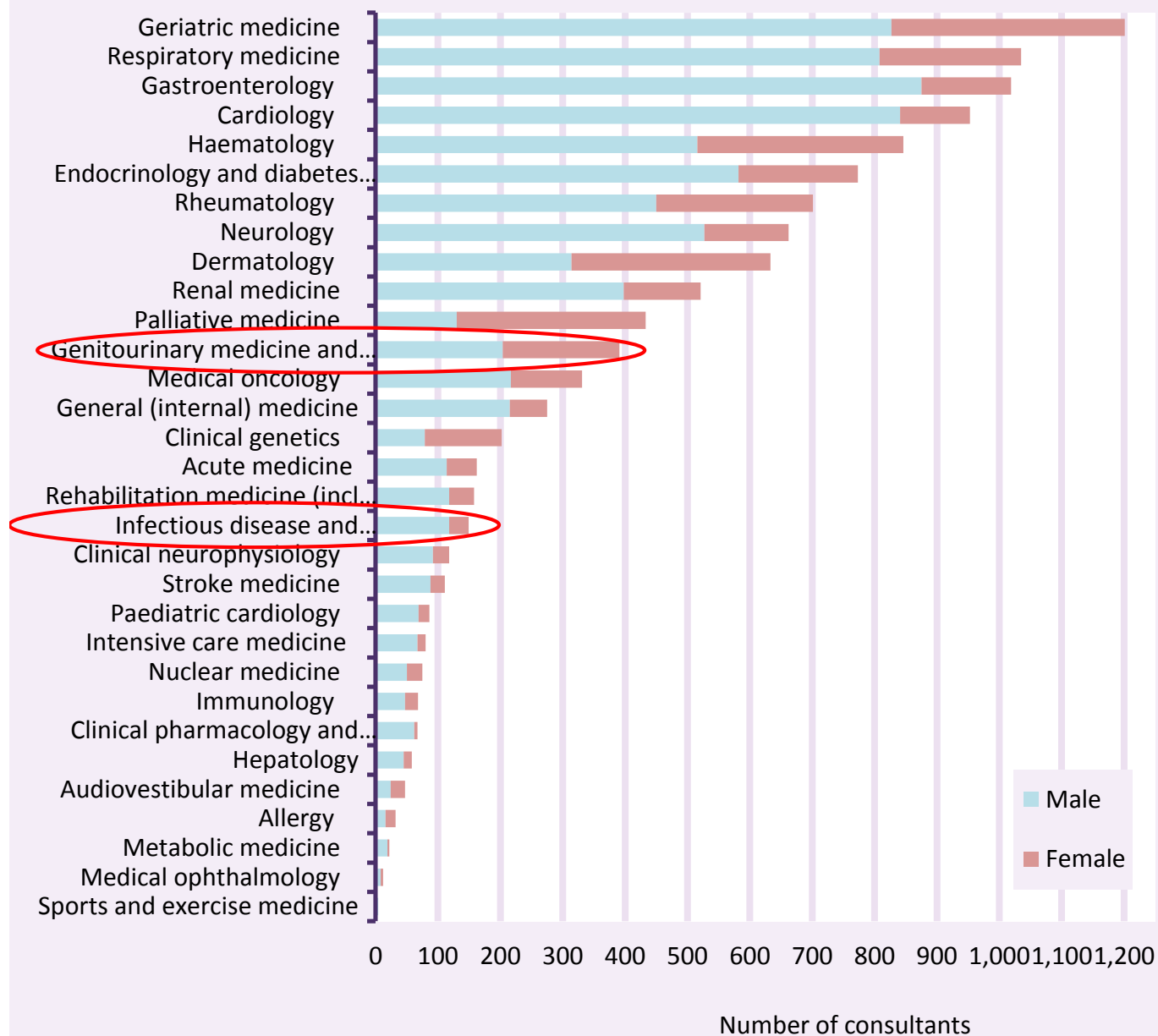
Source: JRCPLB database – 29 September 2011



# Gender of consultant workforce in the medical specialties

## UK – all medical specialties

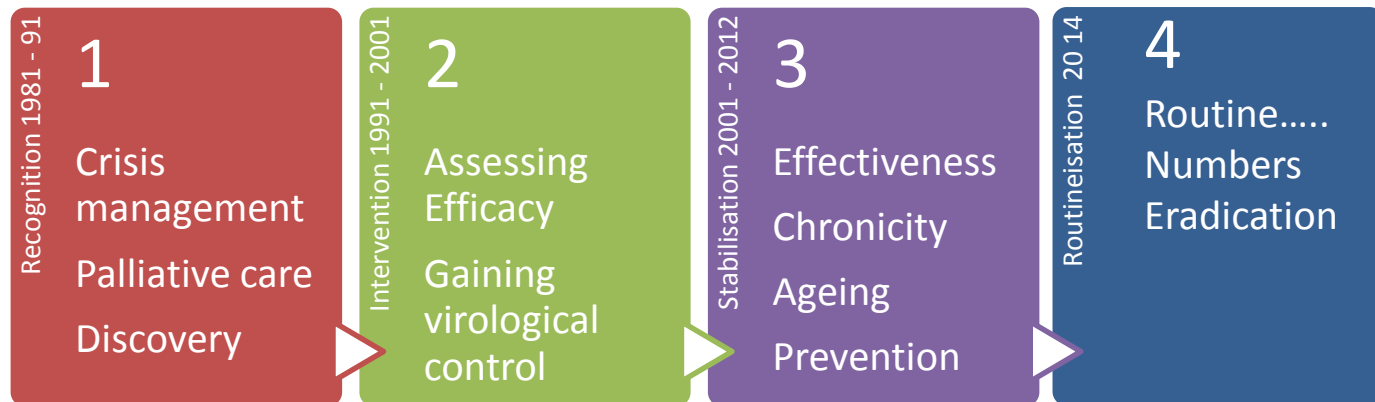
Source: RCP consultant census – census date 30 September 2010





The day job

# Expertise in the fourth decade



*Modified diagram with thanks to Chu C, J Urban Health. 2011 June; 88(3): 556–566*







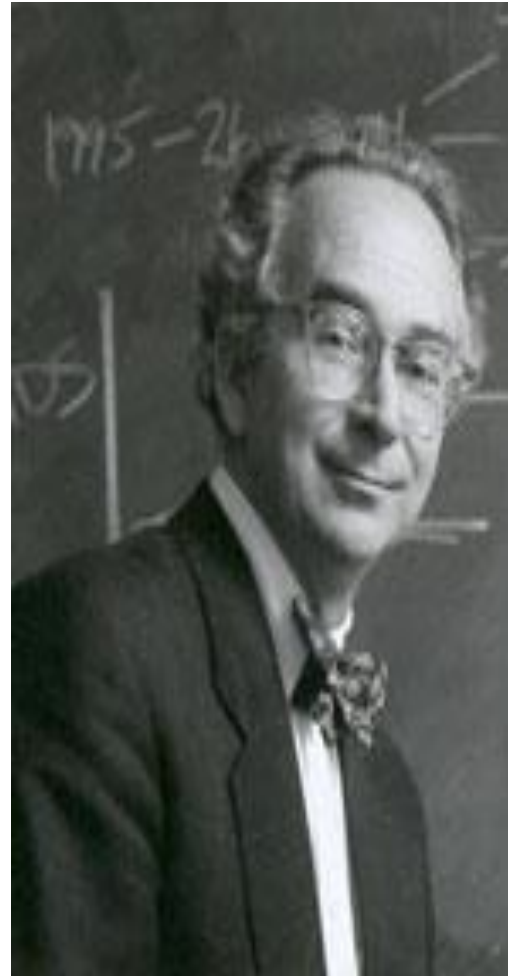




# Jonathan Mann

## 1947 -1998

“The third epidemic,  
of social, cultural,  
economic and political  
reaction to AIDS ....is  
as central to the  
global AIDS challenge  
as the disease itself”



# Fixing and Sorting







*"That's an excellent suggestion, Miss Triggs. Perhaps one of the men here would like to make it."*

# Research and Innovation

# **Centre for the Study of Sexual Health and HIV**

A New Development for  
Homerton



Teaching, Talking & Travel



# *The Worshipful Society of Apothecaries*

*A guide to  
the Society and  
Apothecaries' Hall*

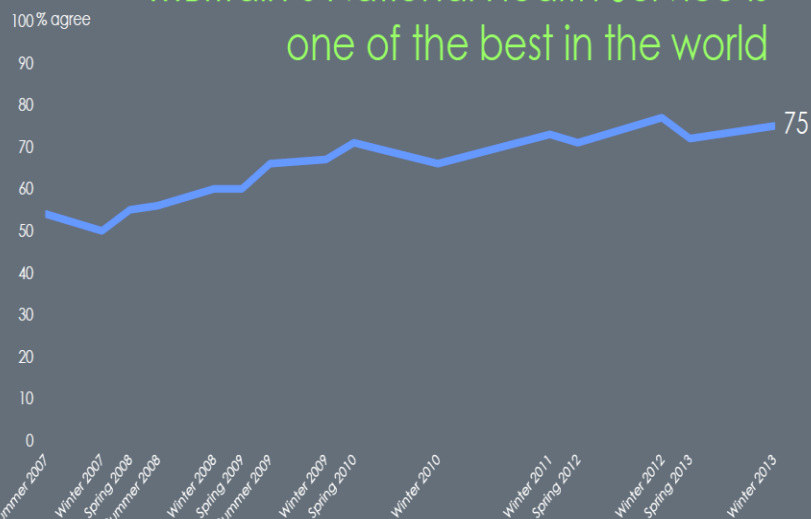
# Maintaining Morale

Professionalism for the 21<sup>st</sup> century

# Pride and Confidence

Pride in the NHS remains very high, with three quarters of the public agreeing that...

...Britain's National Health Service is one of the best in the world



Please tell me whether on the whole you agree or disagree with each of the following statements...

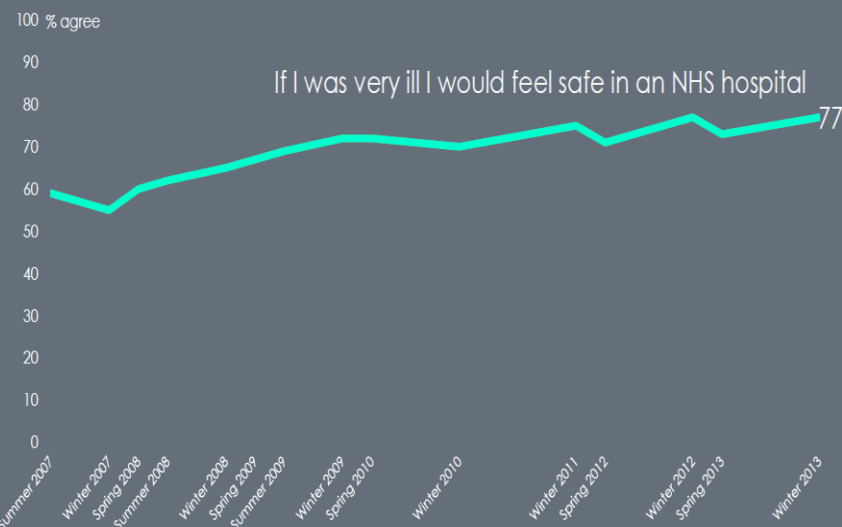
Base: Adults aged 16+ in England (c. 1000 per wave)

Source: Ipsos MORI/DH Perceptions of the NHS Tracker

Ipsos MORI  
Social Research Institute  
© Ipsos MORI Version 1 | Public



Confidence about safety in NHS hospitals is as high as it has ever been



Please tell me whether on the whole you agree or disagree with each of the following statements...

Base: Adults aged 16+ in England (c. 1000 per wave)

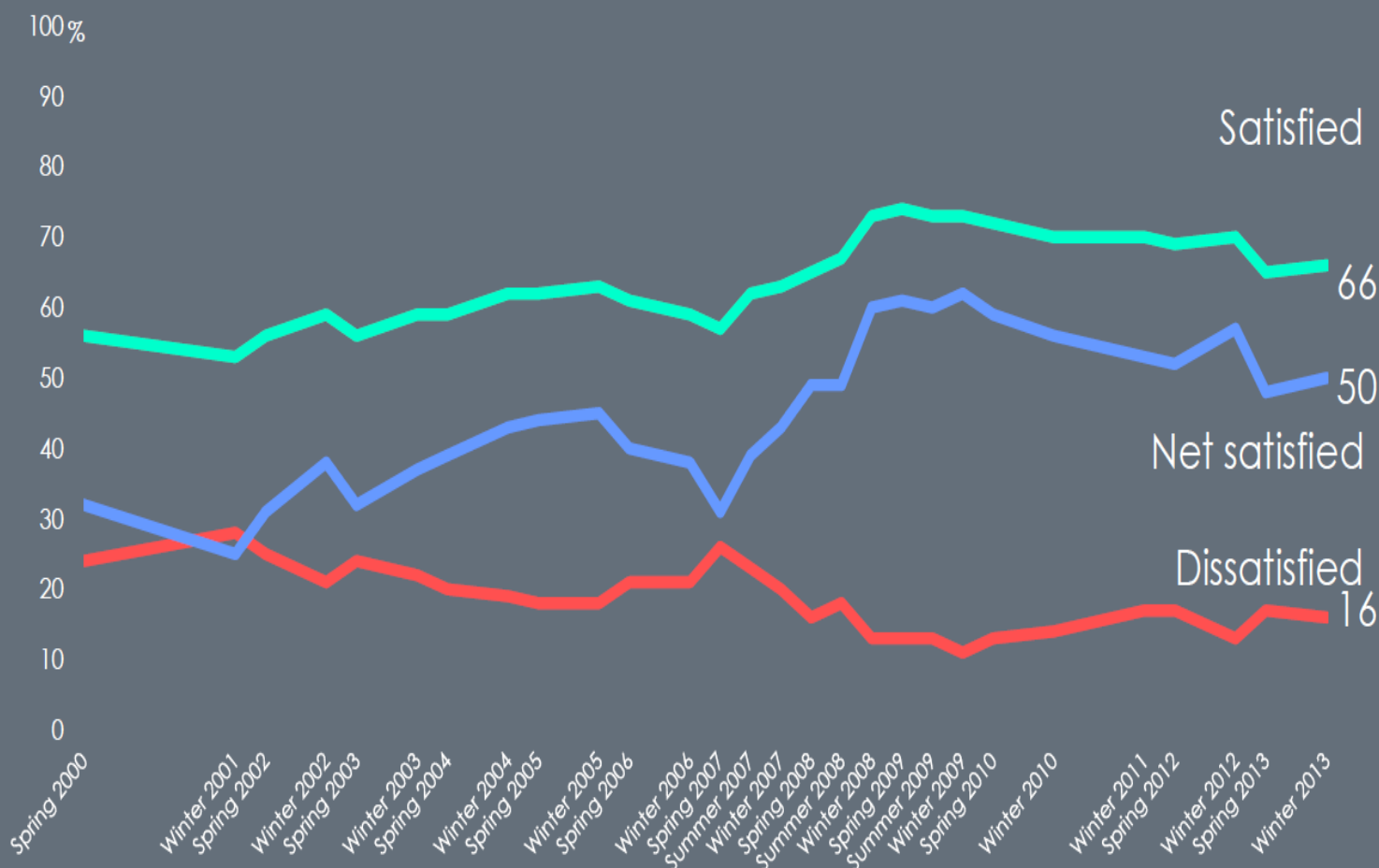
Source: Ipsos MORI/DH Perceptions of the NHS Tracker

Ipsos MORI  
Social Research Institute  
© Ipsos MORI Version 1 | Public





Although lower than levels recorded previously, public satisfaction with the running of the NHS has not changed during the last six months



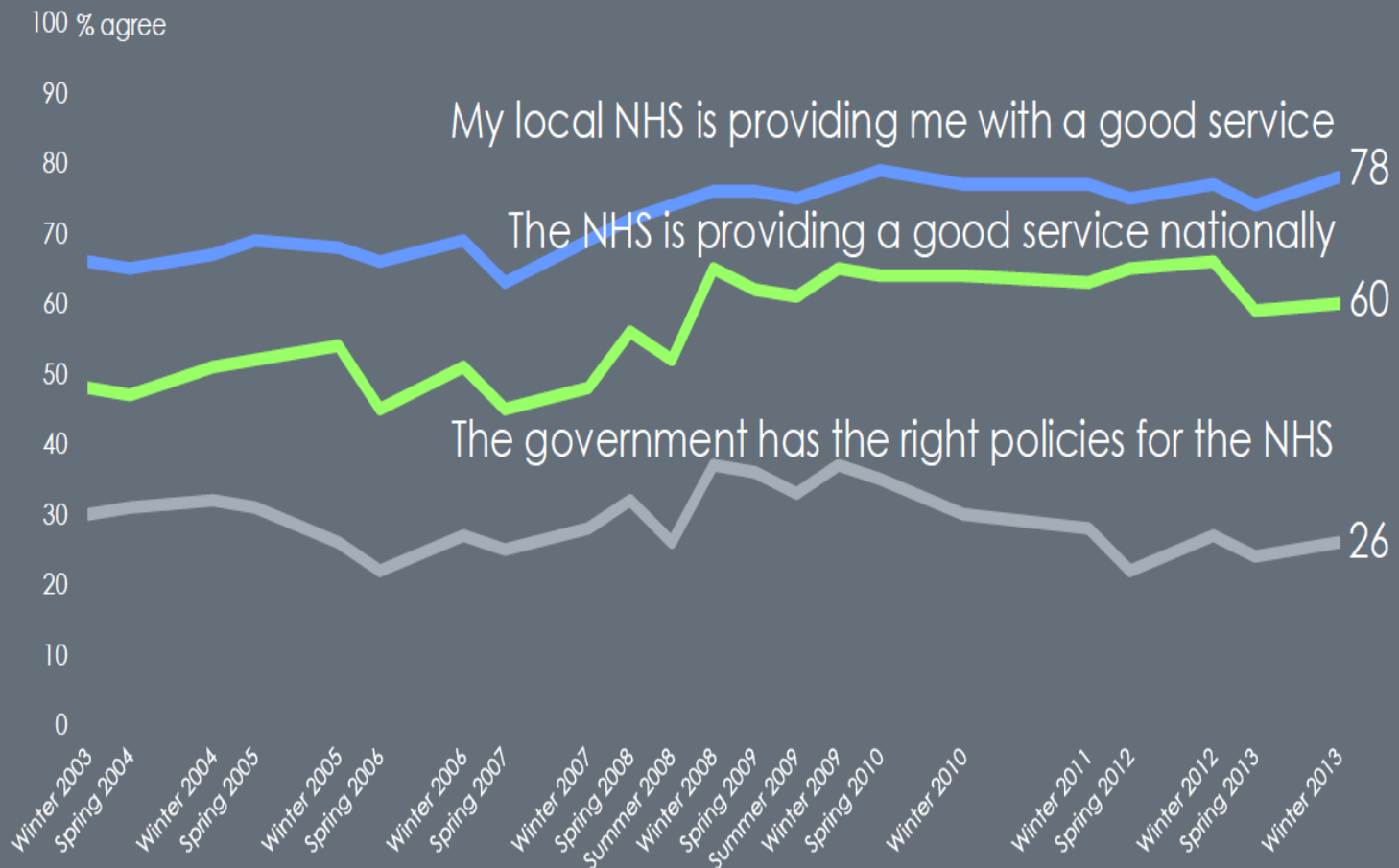
Overall how satisfied or dissatisfied are you with the running of the National Health Service nowadays?

Base: Adults aged 16+ in England (c. 1000 per wave)

Source: Ipsos MORI/DH Perceptions of the NHS Tracker



...while views of local and national NHS services and government policies remain unchanged

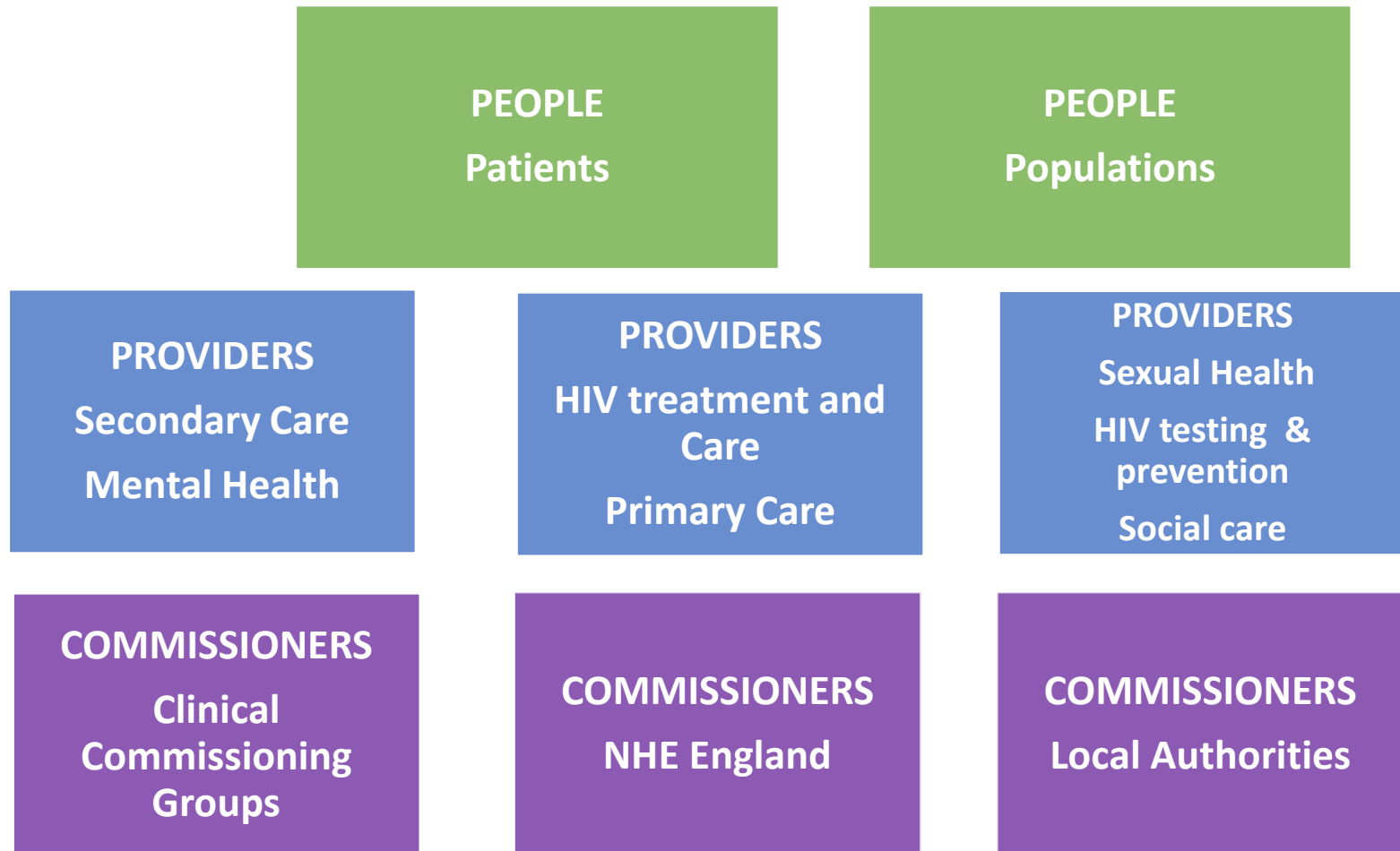


To what extent, if at all, do you agree or disagree with the following statements?

Base: Adults aged 16+ in England (c. 1000 per wave)

Source: Ipsos MORI/DH Perceptions of the NHS Tracker

# The 2014 Archipelago: Risks and opportunities



Making a difference



British HIV Association

# Standards of Care for People Living with HIV 2013

British Psychological Society  
British HIV Association  
Medical Foundation for AIDS & Sexual Health

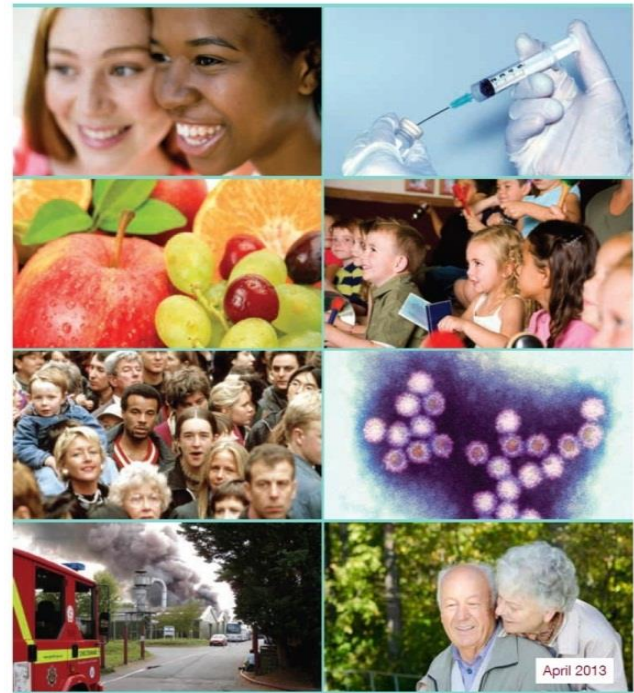
## Standards for psychological support for adults living with HIV

NOVEMBER 2011

## A Framework for Sexual Health Improvement in England

March 2013

## Our priorities for 2013/14

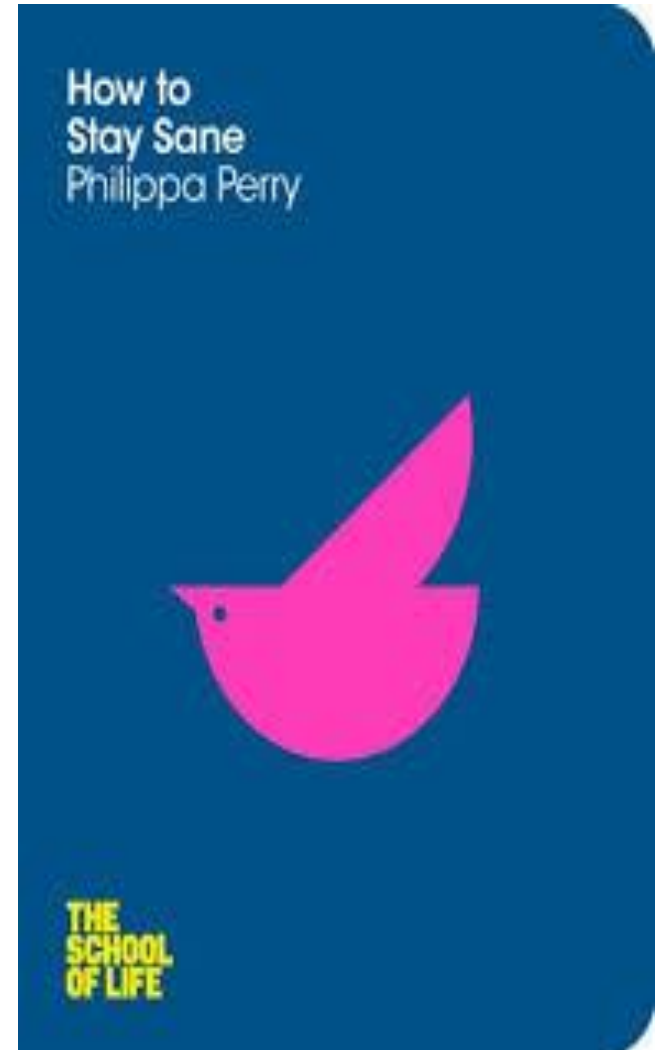




When things get tough



# Staying sane









# Making the most of it

## Notes and Queries on a career in Medicine

Jane Anderson  
janderson@nhs.net  
@profjanderson



Third Joint Conference  
of the  
British HIV Association (BHIVA)  
with the  
British Association for Sexual Health and HIV (BASHH)

**1–4 April 2014**

Arena and Convention Centre · Liverpool