

British HIV Association
BHIVA

FINAL PROGRAMME

BHIVA Autumn Conference

including CHIVA Parallel Sessions

14–15 November 2013

Queen Elizabeth II Conference Centre · London

Preceded by

**Sixth Annual BHIVA Conference for the
Management of HIV/Hepatitis Co-infection**

in collaboration with BASL and BVHG

Wednesday 13 November 2013



www.bhiva.org

18 CPD Credits
Reference No:
83166



**PREZISTA:
800mg tablet
available¹**

PREZISTA (darunavir): **one tablet per day in combination with other antiretrovirals for:**

- Treatment-naïve patients regardless of viral load¹
- Treatment experienced patients with no DRV RAMs, HIV-1 <100,000 copies/ml and CD4 cell count ≥ 100 cells $\times 10^6/l^1$

PREZISTA® ORAL SUSPENSION and FILM-COATED TABLETS PRESCRIBING INFORMATION

ACTIVE INGREDIENT: Darunavir (as ethanolate). Please refer to Summary of Product Characteristics (SmPC) before prescribing. **INDICATIONS:** PREZISTA, co-administered with low dose ritonavir in combination with other antiretroviral medicinal products for treatment of patients with human immunodeficiency virus (HIV 1) infection. **PREZISTA Oral suspension, 75 mg, 150 mg and 600 mg tablets** may be used to provide suitable dose regimens: • For the treatment of HIV 1 infection in antiretroviral treatment (ART) experienced adult patients (including highly pre-treated). • For the treatment of HIV 1 infection in ART experienced paediatric patients from age of 3 years and at least 15 kg body weight. **PREZISTA Oral suspension, 400 mg and 800 mg tablets** may be used to provide suitable dose regimens in adult and paediatric patients from age 12 and at least 40kg body weight who are: • Antiretroviral therapy (ART) naïve. • ART experienced with no darunavir resistance associated mutations (DRV RAMs) and who have plasma HIV 1 RNA < 100,000 copies/ml and CD4+ cell count ≥ 100 cells $\times 10^6/l$. Genotypic or phenotypic testing (when available) and treatment history should guide use of PREZISTA. **DOSAGE & ADMINISTRATION:** Therapy should be initiated by health care provider experienced in management of HIV. Must be taken with food. PREZISTA oral suspension for patients unable to swallow tablets. **ART-naïve adults and children (from age of 12 and at least 40kg):** PREZISTA 800 mg once daily with ritonavir 100 mg once daily. **ART-naïve Children < 12 years or ≥ 12 years with body weight < 40kg:** not recommended. **ART-experienced adults and children (from age of 12 and at least 40kg) with no DRV-RAMs** and who have plasma HIV 1 RNA < 100,000 copies/ml and CD4+ cell count ≥ 100 cells $\times 10^6/l$: PREZISTA 800 mg once daily with ritonavir 100 mg once daily. **All other ART experienced adults:** 600 mg PREZISTA with 100 mg ritonavir twice daily. **ART-experienced paediatric patients: ≥ 15 kg and < 30 kg:** 375 mg or 3.8ml PREZISTA with 50 mg or 0.6ml ritonavir twice daily ≥ 30 kg and < 40 kg: 450 mg or 4.6ml PREZISTA with 60 mg or 0.8ml ritonavir twice daily ≥ 40 kg: 600 mg or 6 ml PREZISTA with 100 mg or 1.2 ml ritonavir twice daily. **Children: < 3 years or < 15 kg body weight:** Not recommended. **Elderly:** Caution; limited information. **Hepatic impairment:** Caution with mild/moderate hepatic impairment; contraindicated with severe hepatic impairment. **Renal impairment:** No dose adjustment required. **CONTRAINDICATIONS:** Hypersensitivity to active substance or any excipients. Severe hepatic impairment. Co-administration with rifampicin or lopinavir/ritonavir combination product. Preparations containing St John's wort. Active substances highly dependent on CYP3A for clearance including amiodarone, bepridil, quinidine, systemic lidocaine, alfuzosin, astemizole, terfenadine, dihydroergotamine, ergometrine, ergotamine, methylxanthines, cisapride, pimozide, sertindole, quetiapine, triazolam, midazolam administered orally, sildenafil (for pulmonary arterial hypertension), simvastatin, lovastatin. **SPECIAL WARNINGS & PRECAUTIONS:** Regular assessment of virological response advised. Perform resistance testing if lack/loss of virological response. Do not use PREZISTA/ritonavir 800/100 mg once daily dose regimen in ART-experienced patients with one or more DRV-RAMs. Advise patients that not a cure for HIV and to take precautions to avoid transmission. **Severe skin reactions:** Discontinue PREZISTA/ritonavir

immediately if signs or symptoms of severe skin reactions develop. Drug Rash with Eosinophilia and Systemic Symptoms (DRESS) Stevens-Johnson Syndrome (SJS), toxic epidermal necrolysis (TEN) and acute generalised exanthematous pustulosis reported. **Rash:** In clinical studies rash occurred more commonly in treatment-experienced patients receiving both PREZISTA + raltegravir compared to patients on PREZISTA without raltegravir. **Patients with known sulphonamide allergy:** Caution; contains sulphonamide moiety. **Hepatotoxicity:** Drug-induced hepatitis reported. Patients with pre-existing liver dysfunction including chronic active hepatitis B or C have increased risk of liver function abnormalities including severe/potentially fatal hepatic adverse events; should be monitored. Prompt interruption/discontinuation of treatment if liver disease worsens. **Haemophilic patients:** Possibility of increased bleeding. **Immune reactivation syndrome (IRS):** Inflammatory reaction to asymptomatic or residual opportunistic pathogens may arise in immune reactive patients with severe immune deficiency at start of combination antiretroviral therapy (CART). Autoimmune disorders reported in IRS. **Other:** Onset/exacerbation of diabetes mellitus/hyperglycaemia reported. Lipodystrophy and metabolic abnormalities. Consider measurement of fasting serum lipids and blood glucose; manage as appropriate. Patients with advanced HIV disease and/or long term exposure to CART may develop osteonecrosis. Life-threatening/fatal drug interactions reported in patients treated with colchicine and powerful CYP3A and P-glycoprotein inhibitors. Patients with renal or hepatic impairment should not be given colchicine with PREZISTA/ritonavir. **INTERACTIONS:** Refer to the SmPC for full details before initiating therapy. Interaction studies in adults only. **Medicinal products that affect darunavir/ritonavir exposure:** Darunavir/ritonavir must not be co-administered with medicinal products that are highly dependent on CYP3A4 for clearance and for which increased systemic exposure is associated with serious and/or life threatening events. See "Contraindications". **Medicinal products that are affected by the concomitant use of darunavir/ritonavir:** **PIs:** Saquinavir: not recommended. Indinavir: dose adjustment may be required. Atazanavir: can be used. Efficacy and safety of darunavir/ritonavir with any other PI not established (e.g. fos amprenavir, nelfinavir and tipranavir). Generally, dual therapy with PIs not recommended. **NRTIs:** Efavirenz: if in combination with PREZISTA/ritonavir, use PREZISTA/ritonavir 600/100 mg twice daily regimen. Clinical monitoring for CNS toxicity may be required. Etravirine, rilpivirine, nevirapine: no dose adjustment required. **NRTIs:** Tenofovir: monitoring of renal function may be required. No interactions expected with zidovudine, zalcitabine, emtricitabine, stavudine, lamivudine, didanosine and abacavir. **Non-antiretroviral products:** Do not use: phenobarbital, phenytoin, voriconazole, salmeterol, tadalafil (for pulmonary arterial hypertension), boceprevir, telaprevir. Monitoring required/possible dose adjustments: carbamazepine, clarithromycin, ketoconazole, itraconazole and clotrimazole, warfarin (monitor INR), calcium channel blockers, oestrogen hormone replacement therapy, cyclosporine, tacrolimus and sirolimus, methadone coadministration, parenteral midazolam, atorvastatin, rosuvastatin, pravastatin PDE-5 inhibitors, rifabutin, colchicine, bosentan. Maraviroc: dose should be 150 mg twice daily. Careful titration required: digoxin, SSRIs. No dose adjustment: H2-receptor antagonists, proton pump inhibitors. Alternative or additional contraceptive measures required: oestrogen

based contraceptives. Caution: artemether/lumefantrine, dexamethasone; sildenafil, tadalafil and vardenafil (treatment of erectile dysfunction). Not recommended: fluticasone, budesonide (unless potential benefit outweighs risk of systemic corticosteroid effects). **PREGNANCY AND LACTATION:** Use during pregnancy only if potential benefit justifies potential risk. HIV infected women must not breast feed their infants under any circumstances. **SIDE EFFECTS:** Refer to SmPC for full details of side effects. Safety profile in children/adolescents similar to adults. **Very common:** diarrhoea. **Common:** lipodystrophy, hypertriglyceridaemia, diabetes mellitus, hypercholesterolaemia, hyperlipidaemia, insomnia, headache, peripheral neuropathy, dizziness, vomiting, nausea, abdominal pain, increased blood amylase, dyspepsia, abdominal distension, flatulence, increased alanine aminotransferase, rash, pruritus, asthenia, fatigue. **Uncommon:** thrombocytopenia, neutropenia, leukopenia, anaemia, immune reconstitution syndrome, drug hypersensitivity, gout, anorexia, hyperglycaemia, insulin resistance, depression, disorientation, anxiety, sleep disorder, paraesthesia, hypoaesthesia, somnolence, conjunctival hyperaemia, vertigo, myocardial infarction, angina pectoris, prolonged electrocardiogram QT, hypertension, dyspnoea, cough, pancreatitis, gastritis, gastroesophageal reflux disease, aphthous stomatitis, constipation, hepatitis, cytolytic hepatitis, hepatic steatosis, increased enzyme levels, angioedema, urticaria, osteonecrosis, osteoporosis, myalgia, arthralgia, renal failure, nephrolithiasis, increased blood creatinine, proteinuria, bilirubinuria, pyrexia, chest pain, peripheral oedema. **Rare:** DRESS, SJS, erythema multiforme. **Not known:** TEN, acute generalised exanthematous pustulosis. **LEGAL CATEGORY:** POM. **PRESENTATIONS, PACK SIZES, MARKETING AUTHORISATION NUMBERS & BASIC NHS COSTS:** 100mg/ml oral suspension: 1 bottle containing 200ml. EU/1/06/380/006. £248.17 75 mg tablets: 1 bottle containing 480 tablets. EU/1/06/380/005. £446.70 150 mg tablets: 1 bottle containing 240 tablets. EU/1/06/380/004. £446.70 400 mg tablets: 1 bottle containing 60 tablets. EU/1/06/380/003. £297.80 600 mg tablets: 1 bottle containing 60 tablets. EU/1/06/380/002. £446.70 800 mg tablets: 1 bottle containing 30 tablets. EU/1/06/380/007. £297.80 **MARKETING AUTHORISATION HOLDER:** Janssen-Cilag International NV, Turnhoutseweg 30, B-2340 Beerse, Belgium. **FURTHER INFORMATION AVAILABLE FROM:** Janssen-Cilag Ltd, 50-100 Holmers Farm Way, High Wycombe, Buckinghamshire HP12 4EG, UK. ©Janssen-Cilag Ltd 2013

Prescribing information last revised: 10/2013
PIVER10/2013

Reporting suspected adverse reactions is important. It allows continued monitoring of the benefit/risk balance of the medicinal product. Healthcare professionals are asked to report any suspected adverse reactions via the Yellow Card Scheme at www.mhra.gov.uk/yellowcard. Adverse events should also be reported to Janssen-Cilag Ltd on 01494 567447.

Item prepared: October 2013

Reference

1. PREZISTA 400mg and 800mg tablets – Summary of Product Characteristics. Date: October 2013.

Date of preparation: October 2013 PHGB/PRE/0713/0005

Janssen
PHARMACEUTICAL COMPANIES
of Johnson & Johnson

PREZISTA®
darunavir

INTRODUCTION

C O N T E N T S

Programme Summary	4	Conference Information	18,19
Programme (Hepatitis Co-infection)	5-7	BHIVA Committees	20
Programme (BHIVA Autumn)	8-15	Exhibition	21
Satellite Symposia and Sponsors' Workshops	16	Speaker Biographies	22-27
Sponsors and Exhibitors	17		

Dear Colleague

Welcome to the **BHIVA Autumn Conference** preceded by the **Sixth Annual BHIVA Conference for the Management of HIV/Hepatitis Co-infection**. Again, both conferences are held at a prestigious conference centre in the heart of London.

I would like to thank Alastair Miller (Chair of the Conferences Subcommittee), Babu Kulasegaram (Chair of the BHIVA Hepatitis Society), Simon Edwards (Conference Local Host) and all the members of the Conferences Subcommittee for their efforts in preparing excellent programmes for these conferences.

In addition, we are delighted to be holding parallel sessions on Friday in collaboration with the Children's HIV Association (CHIVA).

The conference sessions will cover a wide range of important topics relevant to HIV. Please refer to the programme pages for a full schedule of topics and timings. We are particularly delighted to welcome several eminent speakers to London. Our international speakers include **Professor Norbert Bräu, Dr Daniel Douek, Dr Giovanni Guaraldi, Professor Karine Lacombe, Professor Jens Lundgren and Professor Philippe van de Perre**.

The BHIVA Annual General Meeting will be held on Friday 15 November prior to lunch. I would encourage all BHIVA members to attend this meeting as it provides a forum to present any points they may have to the BHIVA Officers and members of the Executive Committee.

Finally, we would like to thank our sponsors for their continued support of the Association which assists greatly with covering some of the costs incurred in organising this conference.

We very much hope you enjoy the programme and find it relevant to both your educational and practical needs.

David Asboe

Dr David Asboe
Chair, British HIV Association



C O N F E R E N C E V E N U E

BHIVA HIV/Hepatitis Conference Queen Elizabeth II Conference Centre, Broad Sanctuary, London SW1P 3EE

Registration	Sanctuary Foyer, Ground Floor
Lecture Theatre	Churchill Auditorium, Ground Floor
Exhibition and Catering	Pickwick Suite, First Floor

BHIVA Autumn Conference Queen Elizabeth II Conference Centre, Broad Sanctuary, London SW1P 3EE

Registration	Sanctuary Foyer, Ground Floor
Lecture Theatre (all BHIVA sessions)	Fleming Room, Third Floor
Lunchtime Workshops	Abbey Room & Henry Moore Room, Fourth Floor
Satellite Symposia	Fleming Room, Third Floor
Exhibition	Benjamin Britten Lounge, Third Floor
Lunch and Refreshments	Benjamin Britten Lounge, Third Floor
Speakers' Presentation Preview Room	East Long Room, Third Floor
Drinks Reception	Benjamin Britten Lounge, Third Floor

CHIVA Parallel Sessions QEII Conference Centre, Broad Sanctuary, London SW1P 3EE

Lecture Theatre	Abbey Room, Fourth Floor
-----------------------	--------------------------

18 CPD Credits

Unique reference number: **83166**

PROGRAMME SUMMARY

WEDNESDAY 13 NOVEMBER

Sixth Annual BHIVA Conference for the Management of HIV/Hepatitis Co-infection *in collaboration with BASL and BVHG*

0900–1550	Registration and exhibition open
0950–1000	Welcome Addresses
1000–1100	Plenary Session 1
1100–1130	Morning coffee
1130–1230	Plenary Session 2
1230–1315	What's in the pipeline? (Part 1)
1315–1400	Lunch
1400–1430	Debate
1430–1530	Plenary Session 3
1530–1550	Afternoon tea
1550–1640	What's in the pipeline? (Part 2)
1640–1800	Plenary Session 4
1800	Close

THURSDAY 14 NOVEMBER

BHIVA Autumn Conference

0815–1830	Registration and exhibition open
0855–0900	Welcome Address
0900–1000	Bristol-Myers Squibb Satellite Symposium
1000–1030	BHIVA Invited Lecture 1
1030–1100	Morning coffee
1100–1200	BHIVA Guidelines Session
1200–1230	BHIVA Foundation Lecture
1230–1400	Lunch
1240–1325	BHIVA Lunchtime Workshop
1255–1355	Janssen Lunchtime Workshop
1400–1500	BHIVA Plenary Session 1
1500–1530	BHIVA Audit Session
1530–1600	BHIVA Invited Lecture 2
1600–1630	Afternoon tea
1630–1730	BHIVA Community Symposium
1730–1830	BHIVA Virtual Clinic
1830–1930	Drinks Reception

FRIDAY 15 NOVEMBER

BHIVA Autumn Conference

0800–1440	Registration and exhibition open
0900–1000	BHIVA Plenary Session 2
1000–1030	Brian Gazzard Lectureship in HIV Medicine
1030–1040	BHIVA Awards Ceremony
1040–1110	Morning coffee
1110–1140	CHIVA Plenary Lecture
1140–1310	BHIVA Best Practice Management Session
1310–1330	BHIVA Annual General Meeting
1310–1440	Lunch
1335–1420	BHIVA Lunchtime Workshop
1335–1435	Bristol-Myers Squibb Lunchtime Workshop
1440–1510	BHIVA/CHIVA Lecture
1510–1610	BHIVA Plenary Session 3
1610–1640	BHIVA Invited Lecture 3
1640–1645	Close

CHIVA Parallel Sessions

Parallel Session 1
CHIVA Debate

Parallel Session 2

Parallel Session 3

HEPATITIS CONFERENCE WITH BASL & BVHG PROGRAMME

WEDNESDAY 13 NOVEMBER 2013



SIXTH ANNUAL BHIVA CONFERENCE FOR THE
MANAGEMENT OF HIV/HEPATITIS CO-INFECTION
in collaboration with BASL and BVHG

◀ All sessions will be held in the Churchill Auditorium, Ground Floor, QEI Conference Centre unless otherwise stated ▶

0900–1550 Registration and exhibition open

0950–1000

Welcome Addresses

Dr Ranjababu Kulasegaram

Chair, BHIVA Hepatitis Society

Professor Graham Foster

Chair, British Association for the Study of the Liver (BASL)

Dr Ashley Brown

Chair, British Viral Hepatitis Group (BVHG)

1000–1100

Plenary Session 1

Chairs: Dr Gary Brook

Central Middlesex Hospital, London

Dr Alastair Miller

Royal Liverpool University Hospital

When to treat HIV/hepatitis co-infection outside drug trials: treat now or wait?

Professor Graham Foster

Queen Mary, University of London

Advances in hepatitis B

Professor Karine Lacombe

Hospital Saint-Antoine, Paris, France

1100–1130

Morning coffee

1130–1230

Plenary Session 2

Chairs: Professor Clifford Leen

Western General Hospital, Edinburgh

Dr Janice Main

Imperial College Healthcare NHS Trust

Insights into the immunopathogenesis of liver disease in HCV/HIV co-infected patients

Professor Paul Klenerman

University of Oxford

Treating NASH in HIV co-infection

Professor Mark Thursz

Imperial College Healthcare NHS Trust, London

1230–1315

What's in the pipeline? (part 1)

Chairs: Dr Robert James

Birchgrove

Dr Ed Ong

Royal Victoria Infirmary, Newcastle

Dr Mariem Charafeddine

AbbVie Ltd

Mrs Tokunbo Soyemi

Boehringer Ingelheim Ltd

Mr Jonty Manuja

Janssen

Panel discussion

HEPATITIS CONFERENCE WITH BASL & BVHG PROGRAMME

WEDNESDAY 13 NOVEMBER 2013

1315–1400

Lunch

1400–1430

Debate

Chairs: Dr Sanjay Bhagani

Royal Free Hospital, London

Professor Geoff Dusheiko

University College London

The motion:

Should HIV physicians treat patients infected with hepatitis?

For the motion:

Dr Mark Nelson

Chelsea and Westminster Hospital, London

Against the motion:

Dr Kosh Agarwal

King's College Hospital, London

1430–1530

Plenary Session 3

Chairs: Dr Chris Taylor

King's College Hospital, London

Dr Ed Wilkins

North Manchester General Hospital

Hepatocellular carcinomas (HCCs)

Professor Norbert Bräu

James J Peters VA Medical Center, New York, USA

Update on liver transplantation in HIV/hepatitis co-infected patients

Dr James O'Beirne

Royal Free Hospital, London

1530–1550

Afternoon tea

1550–1645

What's in the pipeline? (part 2)

Chairs: Dr Guy Baily

Barts Health NHS Trust, London

Dr Chloe Orkin

Barts Health NHS Trust, London

Dr David Butcher

Bristol-Myers Squibb Ltd

Dr Macky Natha

Gilead Sciences Ltd

Dr Valerie Carr

Janssen Therapeutics EMEA

Dr Nadine Chamay

MSD Ltd

Panel discussion

HEPATITIS CONFERENCE WITH BASL & BVHG PROGRAMME

WEDNESDAY 13 NOVEMBER 2013

1645–1800

Plenary Session 4

Chairs: Dr Ashley Brown

Imperial College Healthcare NHS Trust, London

Dr Ranjababu Kulasegaram

St Thomas' Hospital, London

Chairs: Dr Mark Nelson

Chelsea and Westminster Hospital, London

BHIVA guidelines for the management of co-infection with HIV-1 and hepatitis viruses update

Dr Ed Wilkins

North Manchester General Hospital

Difficult HIV/hepatitis co-infection case presentation session

A fly in the face

Dr Olubanke Davies

St Thomas' Hospital, London

Hepatitis B/HIV co-infection in renal disease

Dr Anna Goodman

Royal Free Hospital, London

Expanded Access: a marginal decision

Dr Agata Plonczak

Chelsea and Westminster Hospital, London

1800

Close

Dr Ranjababu Kulasegaram

Chair, BHIVA Hepatitis Society

Dr Ashley Brown

Chair, British Viral Hepatitis Group (BVHG) and on behalf of the British Association for the Study of the Liver (BASL)

Sixth Annual BHIVA Conference for the Management of HIV/Hepatitis Co-infection
in collaboration with BASL and BVHG

S P O N S O R S

abbvie



 Bristol-Myers Squibb

 GILEAD


PHARMACEUTICAL COMPANIES
OF Johnson & Johnson

 MSD

Janssen Therapeutics EMEA
Division of Janssen Pharmaceutica NV

 PHARMACEUTICAL COMPANIES
OF Johnson & Johnson

AUTUMN CONFERENCE PROGRAMME

THURSDAY 14 NOVEMBER 2013



BHIVA AUTUMN CONFERENCE

◀ All sessions will be held in the Fleming Room, Third Floor, QEI Conference Centre unless otherwise stated ▶

0815–1830	Registration and exhibition open
0855–0900	Welcome Address <i>by the Chair of the British HIV Association</i> Dr David Asboe <i>Chelsea and Westminster Hospital, London</i>
0900–1000	Bristol-Myers Squibb Pharmaceuticals Satellite Symposium <i>(see page 16 for further details)</i>
1000–1030	BHIVA Invited Lecture 1 Chair: Dr David Asboe <i>Chelsea and Westminster Hospital, London</i> The resurgent global HIV epidemic in men who have sex with men (MSM) Professor Kevin Fenton <i>Public Health England</i>
1030–1100	Morning coffee
1100–1200	BHIVA Guidelines Session Chairs: Dr Simon Edwards <i>University College London Medical School</i> Dr Adrian Palfreeman <i>Leicester Royal Infirmary</i> Treatment of HIV-1-positive adults with antiretroviral therapy Dr Duncan Churchill <i>Royal Sussex County Hospital, Brighton</i> When to start ARV treatment: why the difference in guideline recommendations? Professor Caroline Sabin <i>Royal Free and University College London Medical School</i> App software for BHIVA Guidelines Dr Simon Edwards <i>University College London Medical School</i> Panel discussion
1200–1230	BHIVA Foundation Lecture Chair: Dr Mark Nelson <i>Chelsea and Westminster Hospital, London</i> Microbial translocation and its role in HIV and viral hepatitis Dr Daniel Douek <i>Vaccine Research Center, National Institute of Health, Bethesda, Maryland, USA</i>
1230–1400	Lunch and Lunchtime Workshops

AUTUMN CONFERENCE PROGRAMME

THURSDAY 14 NOVEMBER 2013

1240–1325

BHIVA Lunchtime Workshop (Abbey Room, Fourth Floor)

Lunchpacks will be provided (see page 18 for further details)

Clinico-pathological SpR case presentations

Chair: Professor Sebastian Lucas

St Thomas' Hospital, London

A difficult diagnosis of AKI in HIV

Dr David Hughes

Brighton and Sussex University Hospitals NHS Trust

A case of Kaposi's

Dr Pavithra Natarajan

Royal Liverpool University Hospital

A dirty hit?

Dr Jonathan Underwood

Imperial College London

1255–1355

Janssen Lunchtime Workshop (Henry Moore Room, Fourth Floor)

Lunchpacks will be provided (see page 16 for further details)

1400–1500

BHIVA Plenary Session 1

Chairs: Dr Andrew Freedman

Cardiff University School of Medicine

Professor Margaret Johnson

Royal Free Hospital, London

Advances in the diagnosis and management of CNS opportunistic infections

Professor Tom Solomon

University of Liverpool

Safety of antiretrovirals in pregnancy

Dr Annemiek de Ruiter

St Thomas' Hospital, London

1500–1530

BHIVA Audit Session

Chairs: Ms Gillian Bell

Sheffield Teaching Hospitals NHS Foundation Trust

Dr Ed Ong

Royal Victoria Infirmary, Newcastle

HIV partner notification: findings of the Joint BHIVA/BASHH audit

Dr Michael Rayment

Chelsea and Westminster Hospital, London

1530–1600

BHIVA Invited Lecture 2

Chair: Professor Jane Anderson

Homerton University Hospital, London

Measuring and improving quality of care

Dr Charlotte Hopkins

Whipps Cross University Hospital

BHIVA is grateful for an educational grant in support of this lecture from MSD Ltd.

Please see page 18 for further details.

1600–1630

Afternoon tea

AUTUMN CONFERENCE PROGRAMME

THURSDAY 14 NOVEMBER 2013

1630–1730

BHIVA Community Symposium

Generic antiretrovirals: what will they mean for patients and HIV services?

Chairs: Mr Garry Brough

UK-Community Advisory Board (UK-CAB)

Dr Ian Williams

University College London Medical School

Patient perspective

Mr Damian Kelly

UK-Community Advisory Board (UK-CAB)

Overseas clinician's perspective

Dr Ceppie Merry

St James's Hospital, Dublin, Ireland

UK clinician's perspective

Dr Marta Boffito

Chelsea and Westminster Hospital, London

Commissioner's perspective

Mr Peter Sharott

NHS England

Panel discussion

1730–1830

BHIVA Virtual Clinic: ART resistance conundrums

Chair: Professor Anna Maria Geretti

University of Liverpool

Transmitted multi-drug resistance: considerations and options

Dr Maria Tsakiroglou

University of Liverpool

A chain reaction

Dr Nurul Huda Mohamad Fadzillah

Royal Liverpool University Hospital

A case of drug–drug interactions

Dr Miriam Samuel

Guy's and St Thomas' NHS Foundation Trust, London

Expert Panel

Professor Pat Cane

Public Health England

Professor Saye Khoo

University of Liverpool

Dr Nicola Mackie

Imperial College Healthcare NHS Trust, London

Dr Steve Taylor

Birmingham Heartlands Hospital

1830–1930

Drinks Reception

Benjamin Britten Lounge, Queen Elizabeth II Conference Centre

AUTUMN CONFERENCE PROGRAMME

FRIDAY 15 NOVEMBER 2013



BHIVA AUTUMN CONFERENCE

◀ All sessions will be held in the Fleming Room, Third Floor, QEII Conference Centre unless otherwise stated ▶

0800–1440	Registration and exhibition open
0800–0855	<p>BHIVA Breakfast Workshop (Henry Moore Room, Fourth Floor)</p> <p>Breakfast will be provided (see page 18 for further details)</p> <p>Patient-reported measures of care quality: what do clinicians and patients think?</p> <p>Chair: Dr Simon Edwards <i>Chair, BHIVA PROMs/PREMs Project Steering Group</i></p> <p>Scene-setting: what do we know about quality of life/patient-reported outcomes in people with HIV?</p> <p>Dr Jonathan Koffman <i>King's College London</i></p> <p>Patient/community perspective</p> <p>Mr Mark Platt <i>UK-Community Advisory Board (UK-CAB)</i></p> <p>About the BHIVA project: seeking your views and input</p> <p>Dr Hilary Curtis <i>BHIVA PROMs/PREMs Project Co-ordinator</i></p> <p>Panel discussion</p>
0900–1000	<p>BHIVA Plenary Session 2</p> <p>Chairs: Dr Alastair Miller <i>Royal Liverpool University Hospital</i></p> <p>Dr Adrian Palfreeman <i>Leicester Royal Infirmary</i></p> <p>Frailty and HIV: what is the evidence?</p> <p>Dr Giovanni Guaraldi <i>University of Modena, Italy</i></p> <p>HIV-positive healthcare workers</p> <p>Dr Keith Radcliffe <i>Whitall Street Clinic, Birmingham</i></p>
1000–1030	<p>Brian Gazzard Lectureship in HIV Medicine</p> <p>Chair: Professor Brian Gazzard <i>Chelsea and Westminster Hospital, London</i></p> <p>Understanding patient beliefs and improving adherence</p> <p>Professor Rob Horne <i>University of London</i></p>
1030–1040	BHIVA Awards Ceremony
1040–1110	Morning coffee

AUTUMN CONFERENCE PROGRAMME

FRIDAY 15 NOVEMBER 2013

1110–1140

CHIVA Plenary Lecture

Chair: Dr Steve Welch
Birmingham Heartlands Hospital

The science of transmission of HIV via breastmilk

Professor Philippe van de Perre
Arnaud de Villeneuve Hospital, Montpellier, France

1140–1310

BHIVA Best Practice Management

Chairs: Dr Ranjababu Kulasegaram
St Thomas' Hospital, London
Dr Ed Wilkins
North Manchester General Hospital

Peripheral neuropathy

Professor Andrew Rice
Chelsea and Westminster Hospital, London

HIV-associated chronic obstructive airways disease

Professor Rob Miller
University College London Medical School

Endocrine disorders

Dr John Quin
Royal Sussex County Hospital, Brighton
Dr Debbie Williams
Royal Sussex County Hospital, Brighton

1310–1330

BHIVA Annual General Meeting

1310–1440

Lunch and Lunchtime Workshops

1340–1425

BHIVA Lunchtime Workshop (Abbey Room, Fourth Floor)

Lunchpacks will be provided (see page 18 for further details)

Chair: Dr Iain Reeves
Homerton University Hospital, London

Mental health and psychological issues in HIV

Dr Jenny Petrak
Homerton University Hospital, London

Mr Chris Sandford
Mortimer Market Centre, London

1335–1435

Bristol-Myers Squibb Pharmaceuticals Lunchtime Workshop

(Henry Moore Room, Fourth Floor)
Lunchpacks will be provided (see page 16 for further details)

1440–1510

BHIVA/CHIVA Lecture

Chair: Dr Karen Rogstad
Royal Hallamshire Hospital, Sheffield

The unique trials of George Gwaze: A story of HIV, stigma, alleged murder, strange justice, New Zealand – and earthquakes!

Professor Sebastian Lucas
St Thomas' Hospital, London

AUTUMN CONFERENCE PROGRAMME

FRIDAY 15 NOVEMBER 2013

1510–1610

BHIVA Plenary Session 3

Chairs: Dr Sanjay Bhagani

Royal Free Hospital

Professor Caroline Sabin

Royal Free and University College London Medical School

Cohorts; past, present and future

Professor Jens Lundgren

University of Copenhagen, Denmark

Discussant

Dr Giovanni Guaraldi

University of Modena, Italy

Panel discussion

BHIVA is grateful for the educational funding in support of this session from Bristol-Myers Squibb Pharmaceuticals Ltd. Please see page 18 for further details.

1610–1640

BHIVA Invited Lecture 3

Chair: Professor Clifford Leen

Western General Hospital, Edinburgh

New antiretroviral drugs and strategies

Professor Saye Khoo

University of Liverpool

1640–1645

Close by the Chair of the British HIV Association

Dr David Asboe

Chelsea and Westminster Hospital, London



CHIVA PARALLEL SESSIONS PROGRAMME

FRIDAY 15 NOVEMBER 2013



CHIVA PARALLEL SESSIONS
in collaboration with pTBnetUK

◀ Parallel sessions will be held in the Abbey Room, Fourth Floor, QEI Conference Centre, unless otherwise stated ▶

Please read the **CHIVA Parallel Sessions** programme in conjunction with the **BHIVA Autumn Conference** programme

MOVING FORWARD TOGETHER

0800–1440 Registration and exhibition open

0900–0905

Welcome addresses

Dr Steve Welch

Children's HIV Association (CHIVA)

Dr James Seddon

Paediatric Tuberculosis Network UK (pTBnetUK)

0905–1000

Session 1

Chairs: Dr Colin Ball

King's College Hospital, London

Dr James Seddon

Imperial College Healthcare NHS Trust, London

Epidemiology of HIV and TB in children in the UK and Europe

Dr Anna Turkova

Imperial College Healthcare NHS Trust, London

The role of patients and young people in HIV and TB treatment

CHIVA Youth Committee

TB Action Group (TBAG)

1000–1040

CHIVA/pTBnetUK debate

Chairs: Dr Alasdair Bamford

Great Ormond Street Hospital for Children, London

Dr Nuria Martinez-Alier

Guy's and St Thomas NHS Foundation Trust, London

The motion:

This house believes that directly observed treatment should be the standard of care

For the motion:

Professor Karina Butler

Our Lady's Children's Hospital, Dublin, Ireland

Against the motion:

Dr Sam Walters

Imperial College Healthcare NHS Trust, London

1040–1110

Morning coffee

Benjamin Britten Lounge, Third Floor

1110–1140

CHIVA Plenary Lecture

Fleming Room, Third Floor (see page 12 for further details)

CHIVA PARALLEL SESSIONS PROGRAMME

FRIDAY 15 NOVEMBER 2013

1150–1330

Session 2

Chairs: Ms Michelle Overton
Faith in People with HIV
Dr Steve Welch
Birmingham Heartlands Hospital

The role of research networks

Professor Beate Kampmann
Imperial College London

Advocacy and raising the profile of HIV and TB in the UK

Ms Rachel Dukes
TB Alert

Ms Magda Conway
CHIVA Projects

Drug development: where do children fit in to the pipeline?

Dr Katia Boven
Janssen, USA

1330–1440

Lunch

Benjamin Britten Lounge and Whittle Room, Third Floor

1440–1510

BHIVA/CHIVA Lecture

Fleming Room, Third Floor (see page 12 for further details)

1520–1655

Session 3

Chairs: Dr Katja Doerholt
St George's Hospital, London
Dr Srin Bandi
Leicester Royal Infirmary

The future role of paediatric healthcare professionals

The nurse

Ms Fiona Cook
Arthur's Hill Clinic, Newcastle

Ms Ailsa Pickering
Royal Victoria Infirmary, Newcastle

The clinician

Dr Fiona Shackley
Sheffield Children's Hospital

The psychologist

Dr Tomás Campbell
Newham Psychological Services, London

Social care

Ms Tarryn Klotnick
Great Ormond Street Hospital for Children, London

Panel discussion

Talking to children about HIV

Mrs Sheila Donaghy
St George's Hospital, London

Dr Diane Melvin
Imperial College Healthcare NHS Trust, London

1655–1700

Close

Dr Steve Welch
Children's HIV Association (CHIVA)
Dr James Seddon
Paediatric Tuberculosis Network UK (pTBnetUK)

PROGRAMME OF SATELLITE SYMPOSIA AND SPONSORS' LUNCHTIME WORKSHOPS

All satellite symposia will be held in the Fleming Room, Third Floor, QEI Conference Centre

Locations of sponsors' workshops are listed below adjacent to the respective events

THURSDAY 14 NOVEMBER

0900–1000

Bristol-Myers Squibb Pharmaceuticals Satellite Symposium
HIV cure: Principles and Pragmatism

Chair: Dr Sarah Fidler
Imperial College London

Is HIV cure achievable?

Professor Javier Martinez-Picado
AIDS Research Institute IrsiCaixa, Barcelona, Spain

The hows and whys of post-treatment control

Dr John Frater
Oxford University

An overview of HIV cure research in the UK

Dr Sarah Fidler
Imperial College London

Panel discussion and questions

1255–1355

Janssen Lunchtime Workshop (Henry Moore Room, Fourth Floor)
Lunchpacks will be provided

HIV and Mental Health: A complex relationship – what more can we do?

An interactive session featuring:

Ms Silvia Petretti
Positively UK

Dr Iain Reeves
Homerton University Hospital, London

Dr Christopher Hilton
Ealing Hospital, West London Mental Health NHS Trust

FRIDAY 15 NOVEMBER

1335–1435

Bristol-Myers Squibb Pharmaceuticals Interactive Lunchtime Workshop
(Henry Moore Room, Fourth Floor)
Lunchpacks will be provided

Questioning the standard of care: Early-line treatment choices

Chair: Dr Ed Wilkins
North Manchester General Hospital

Panel:

Dr Anton Pozniak
Chelsea and Westminster Hospital, London

Dr Andy Ustianowski
North Manchester General Hospital

SPONSORS AND EXHIBITORS

BHIVA MAJOR SPONSORS 2013

AbbVie Ltd

Abbott House,
Vanwall Business Park
Maidenhead
Berkshire SL6 4XE



Boehringer Ingelheim Ltd

Ellesfield Avenue
Bracknell
Berkshire RG12 8YS



Bristol-Myers Squibb Pharmaceuticals Ltd

Uxbridge Business Park
Sanderson Road
Middlesex UB8 1DH



Gilead Sciences Ltd

Granta Park
Great Abington
Cambridgeshire CB21 6GT



Janssen

50-100 Holmers Farm Way
High Wycombe
Buckinghamshire HP12 4EG



MSD Ltd

Hertford Road
Hoddesdon
Hertfordshire EN11 9BU



ViiV Healthcare UK Ltd

Stockley Park West
Uxbridge
Middlesex UB11 1BT



EXHIBITORS

Commercial

Blithe Computer Systems Ltd

6PM

Educational and Charitable

Medical Research Council (MRC)

Help Make History

CHIVA Africa

Mildmay Mission Hospital

Community

Body and Soul

NAM

Positively UK

Terrence Higgins Trust

National AIDS Trust

HIV Scotland

BHIVA Major Sponsors and Commercial Exhibitors have supported the BHIVA Autumn Conference by purchasing Exhibition Stand space.

Autumn

The BHIVA Autumn Conference
is organised and administered by

Mediscript Ltd

MEDICAL EDUCATION
Publishing · Conferences · Secretariat

CONFERENCE INFORMATION

Registration

Your registration fee includes access to the scientific sessions as indicated below for each meeting, including satellite symposia and exhibition stands.

BHIVA Autumn Conference: 14–15 November 2013

The registration fee gives access to the scientific sessions of the BHIVA Autumn Conference and the CHIVA Parallel Sessions, including satellite symposia. All refreshments and lunches throughout the conference are included in the registration fee.

Sixth Annual BHIVA Conference for the Management of HIV/Hepatitis Co-infection in collaboration with BASL and BVHG: Wednesday 13 November 2013

The registration fee gives access to the Sixth Annual BHIVA Conference for the Management of HIV/Hepatitis Co-infection, prior to the BHIVA Autumn Conference. Lunch and refreshments are included in the registration fee.

Children's HIV Association (CHIVA) Parallel Session in collaboration with pTBnetUK: Friday 15 November 2013

The registration fee gives access to the Parallel Sessions, the CHIVA Plenary Session and the CHIVA/BHIVA Lecture. In addition, refreshments and lunch on Friday 15 November are included. The Parallel Sessions are preceded by the **CHIVA Dinner** at a central London location from 2000 on Thursday 14 November for those who have booked tickets and paid the necessary fee.

BHIVA Breakfast and Lunchtime Workshops

Places are limited and will be restricted to 80 delegates per workshop. Places will be available on site, **on a first-come, first-served basis**, at the door of the lunchtime workshop. Doors will open 15 minutes prior to the start of each workshop. Each workshop will begin promptly and refreshments will be provided for delegates attending these sessions.

BHIVA Invited Lectures and Sessions supported by bursary grants

With BHIVA conferences starting later in the day, finishing earlier in the evening and extending the duration of lunch breaks, BHIVA has replaced the previously sponsored Invited Lecture format with a new arrangement of BHIVA Invited Lectures supported by bursary grants, kindly donated by BHIVA sponsors. All correspondence and liaison with the speakers invited to participate in these sessions has been administered by BHIVA and the speakers are under no obligation to the sponsoring company. Donated bursaries will go towards supporting the honorarium, travel and accommodation of BHIVA speakers. The slots are educational in content, form part of the BHIVA plenary programme, and qualify for CPD accreditation.

Prizes and awards

The Don Jeffries BHIVA Research Award

BHIVA has created an award in honour of the late Professor Don Jeffries. This will be awarded for the highest-scoring application, as judged by the BHIVA Research Awards Judging Panel, from the 18 applications submitted for the 2013 BHIVA Research Awards. The award will be presented in the Lecture Theatre at the BHIVA Awards Ceremony at 1030–1040 on Friday 15 November 2013.

BHIVA Best SpR Case Presentations

A prize will be awarded to the presenter of the best case presentation as part of the Difficult HIV/Hepatitis Co-infection SpR Case Presentation Session to be held at the Sixth Annual BHIVA Conference for the Management of HIV/Hepatitis Co-infection in collaboration with BASL and BVHG. In addition, a prize will be awarded to the presenter of the best case presentation as part of the Clinico-pathological Case Presentations Workshop on Thursday 14 November 2013.

BMS Exchange Scholarships in collaboration with BHIVA, HIVPA and SAHIVCS

The BMS Specialist Registrar Exchange Scholarships in collaboration with BHIVA, HIVPA and SAHIVCS (South African HIV Clinicians Society) has invited applications from UK-based Specialist Registrars (SpRs), Specialty Registrars (StRs) and pharmacists who are working in the field of HIV medicine and who are BHIVA members. The successful applicants from the UK have taken part in an exchange programme to Botswana for two weeks and successful applicants from Botswana will participate in a clinical programme in the UK for two weeks following the BHIVA Autumn Conference.

Gilead/BHIVA SpR Research Award

Trainees in all medical specialties are required to undertake a period of research as an integral part of their higher professional training. However, funding such research is not always easy. BHIVA is delighted that Gilead Sciences are offering funds to facilitate high-quality research from doctors in training. Applications have been assessed by a panel drawn from members of the BHIVA Executive Committee. The award will be presented in the lecture theatre at the BHIVA Awards Ceremony at 1030–1040 on Friday 15 November 2013.

CONFERENCE INFORMATION

Drinks Reception

The Drinks Reception immediately follows the conference programme at 1830–1930 on Thursday 14 November and will take place in the exhibition area located in the Benjamin Britten Lounge on the Third Floor.

Continuing Professional Development (CPD)

Medical staff in career grade posts who are enrolled with one of the Royal Medical Colleges for Continuing Professional Development will receive CPD credit at the rate of one CPD credit per conference hour (exclusive of travel, refreshments, social events and satellite symposia). The conference will be allocated a maximum of 6 CPD credits per conference day.

CPD Accreditation: Credits attributed and unique reference number		
Sixth Annual BHIVA Conference for the Management of HIV/Hepatitis Co-infection	6 Credits	83 166
BHIVA Autumn Conference including CHIVA Parallel Sessions	12 Credits	83 166
CHIVA Parallel Sessions only	6 Credits	83 166

BHIVA Community Registration

BHIVA has supported free registration for over 30 community representatives to attend the conference.

BHIVA Registration Scholarships

BHIVA Registration Scholarships have been made available to 6 delegates who are doctors and who are retired, not working or employed in a part-time or equivalent capacity, or who are students involved in full-time undergraduate or post-graduate work. The scholarships cover the conference registration fee.

Cloakroom

A staffed cloakroom is available at the Queen Elizabeth II Conference Centre. All belongings are left at the owner's risk. The Queen Elizabeth II Conference Centre and the British HIV Association do not accept responsibility for the loss of, or damage to, delegates' personal property stored in the cloakroom areas.

Conference venue

Queen Elizabeth II Conference Centre

Broad Sanctuary · Westminster · London SW1P 3EE · Tel: +44 (0)20 7222 5000 · Web: qeicc.co.uk

The conference venue is a short walk from Westminster or St James's Park underground stations. Please see the map for the location of these stations in relation to the Queen Elizabeth II Conference Centre.

Westminster and St James's Park underground stations are easily accessible from King's Cross, St Pancras (Eurostar) and Victoria main-line rail stations and can be accessed by the Jubilee line or the Circle and District lines. The journey from these main-line stations to Westminster or St James's Park underground stations takes approximately 10 minutes and costs approximately £4.

There are also good links to the city centre from both Heathrow and Gatwick airports. Journeys by either Heathrow or Gatwick Express take about 1 hour.

There are four car parks near to the conference venue. For further information please visit www.ncp.co.uk

Please note that the conference venue is located within the London congestion charge zone.



BHIVA COMMITTEES

EXECUTIVE COMMITTEE

OFFICERS

Chair

Dr D Asboe Chelsea and Westminster Hospital, London

Vice Chair

Dr AJ Palfreeman Leicester Royal Infirmary

Honorary Secretary

Dr A de Ruiter St Thomas' Hospital, London

Honorary Treasurer

Prof C Leen Western General Hospital, Edinburgh

MEMBERS

Prof J Anderson Homerton University Hospital, London

Dr S Bhagani Royal Free Hospital, London

Mr G Brough UK Community Advisory Board

Dr D Churchill Royal Sussex County Hospital, Brighton

Dr C Emerson The Royal Hospitals, Belfast

Prof MJ Fisher Royal Sussex County Hospital, Brighton

Dr AR Freedman Cardiff University School of Medicine

Prof BG Gazzard Chelsea and Westminster Hospital, London

Prof S Khoo University of Liverpool

Dr RB Kulasegaram St Thomas' Hospital, London

Dr A Miller Royal Liverpool University Hospital

Dr MR Nelson Chelsea and Westminster Hospital, London

Dr ELC Ong Royal Victoria Infirmary, Newcastle

Dr K Rogstad Royal Hallamshire Hospital, Sheffield

Prof C Sabin Royal Free and University College London Medical School

Dr EGL Wilkins North Manchester General Hospital

BHIVA HEPATITIS SOCIETY

EXECUTIVE PANEL

Dr Kosh Agarwal Invited Representative

Dr David Asboe BHIVA Executive Committee member

Dr Sanjay Bhagani BHIVA Executive Committee member

Dr Gary Brook Invited Representative

Dr Ashley Brown Invited Representative

Dr Robert James Patient Representative

Dr Ranjababu Kulasegaram
Chair

Prof Clifford Leen BHIVA Executive Committee member

Dr Alastair Miller BHIVA Executive Committee member

Dr Mark Nelson Vice Chair

Dr Ed Wilkins BHIVA Executive Committee member

CONFERENCES SUBCOMMITTEE

Dr Alastair Miller Chair

Dr David Asboe BHIVA Executive Committee member

Mr Garry Brough BHIVA Executive Committee member and Community Representative

Dr Annemiek de Ruiter
BHIVA Executive Committee member

Dr Simon Edwards Local Host, Autumn 2013

Dr Carol Emerson BHIVA Executive Committee member

Prof Martin Fisher BHIVA Executive Committee member

Dr Ranjababu Kulasegaram
BHIVA Executive Committee member

Prof Clifford Leen BHIVA Honorary Treasurer

Dr Mark Nelson BHIVA Education and Scientific Subcommittee Chair

Dr Chloe Orkin Invited Representative

Dr Adrian Palfreeman BHIVA Executive Committee member

Dr Karen Rogstad BHIVA Executive Committee member

Dr Laura Waters Invited Representative

Dr Ed Wilkins BHIVA Executive Committee member

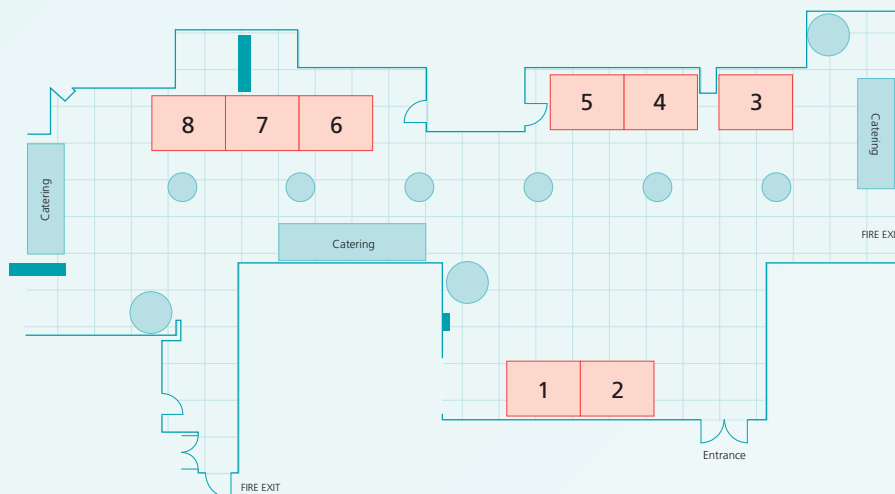
EXHIBITION

Sixth Annual BHIVA Conference for the Management of HIV/Hepatitis Co-infection *in collaboration with BASL and BVHG*

QUEEN ELIZABETH II CONFERENCE CENTRE · Pickwick Suite · First Floor

EXHIBITORS

- 1 AbbVie
- 2 MSD
- 3 Janssen
- 4 Gilead Sciences
- 5 Boehringer Ingelheim
- 6 Janssen Therapeutics EMEA
- 7 Bristol-Myers Squibb Pharmaceuticals
- 8 MSD HCV

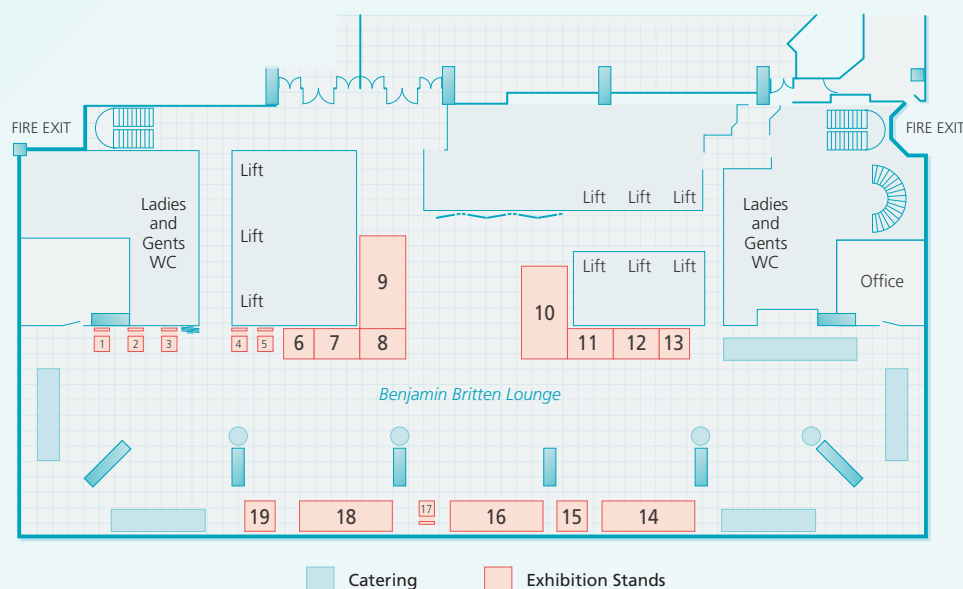


BHIVA Autumn Conference

QUEEN ELIZABETH II CONFERENCE CENTRE · Benjamin Britten Lounge · Third Floor

EXHIBITORS

- 1 Medical Research Council (MRC)
- 2 Body and Soul
- 3 Positively UK
- 4 Terrence Higgins Trust
- 5 NAM
- 6 Help Make History
- 7 MSD
- 8 Blithe Computer Systems
- 9 Bristol-Myers Squibb Pharmaceuticals
- 10 Janssen
- 11 6PM
- 12 Boehringer Ingelheim
- 13 CHIVA Africa
- 14 Gilead Sciences
- 15 Mildmay Mission Hospital
- 16 ViiV Healthcare
- 17 National AIDS Trust
- 18 AbbVie
- 19 HIV Scotland



Note: Exhibition plans are not to scale

SPEAKER BIOGRAPHIES

Kosh Agarwal is a Consultant Hepatologist and Transplant Physician at the Institute of Liver Studies, King's College Hospital. He is one of five transplant hepatologists, delivering the largest liver transplant programme in Europe. Dr Agarwal is also Lead for the Viral Hepatitis Service, the largest treatment centre for viral hepatitis in the UK. In 1991 Dr Agarwal graduated from Newcastle University and his postgraduate training was undertaken in Newcastle with the majority of his clinical and research training at the Regional Liver and Transplant Unit. Prior to his appointment at King's, Dr Agarwal was a Consultant and Honorary Senior Lecturer at the Regional Liver and Transplant Unit in Newcastle. He also spent a year at the Division of Liver Diseases, Mount Sinai, New York, USA. Dr Agarwal is an investigator for several ongoing studies evaluating the safety and efficacy of various antiviral treatment regimens for chronic hepatitis B and C. He is a member of EASL, AASLD, BASL and ILTS.

David Asboe is a Consultant in HIV Medicine and Sexual Health at Chelsea and Westminster Hospital. Dr Asboe studied medicine at Otago University Medical School, New Zealand and completed specialist training in Genitourinary Medicine at St Thomas' Hospital London. He is Research Lead for the Division of Women's, Children, HIV and GU Medicine, Chelsea and Westminster Hospital, London. He is an honorary Senior Lecturer, Imperial College of Science, Technology and Medicine. His research interests are antiretroviral resistance and the sexual health of HIV-positive individuals. He is the Convenor of the Diploma HIV Medicine, and is a Trustee on the Executive Committee of the British HIV Association. Within BHIVA, Dr Asboe sits on the Conferences Subcommittee and on the Education and Scientific Subcommittee. He was elected as BHIVA Chair to serve from July 2013 to 2016.

Gill Bell has been a sexual health adviser since 1989, and a nurse consultant since 2004, at Genitourinary Medicine in Sheffield. She has a particular interest in developing and evaluating partner notification (PN) services for STIs, including HIV, in a variety of care settings. She is Chair of the South Yorkshire HIV Network Public Health Group, which has audited PN outcomes for HIV PN across the region. She provides national training on Partner Notification and Motivational Interviewing. Publications include several research studies and national guidelines on PN and outreach work in the Manual for Sexual Health Advisers (SSHA 2004).

Ashley Brown graduated from Liverpool Medical School. He undertook postgraduate training in hepatology in Newcastle-upon-Tyne where he was awarded an MD for research into the pharmacogenetics of alcohol metabolism. He worked as a consultant on liver units in Australia and the UK before taking up his current position at Imperial College Healthcare in 2002. He has a major clinical interest in viral hepatitis and is currently conducting a number of studies into novel therapies for HBV and HCV.

Marta Boffito trained in general medicine and infectious diseases at the Universities of Turin, Italy and San Francisco, USA. She obtained her PhD in 2004 at the University of Liverpool, UK with a thesis on the pharmacokinetics and pharmacodynamics of antiretroviral therapy. Currently, she is a Consultant Physician (Chelsea and Westminster Hospital), Clinical Lead in Clinical Trials (St Stephen's AIDS Trust), and Honorary Senior Lecturer (Imperial College), where, in addition to her clinical duties, she is heavily involved in numerous research projects.

Katia Boven is Head of the Medical Department in Global Clinical Research and Development for Infectious Diseases and Vaccines at Janssen. She is a paediatrician with experience in immune deficiencies, auto-immunity and nephrology. She was responsible for the paediatric dialysis and kidney transplant program in the University Hospital Antwerp and lecturer at the university from 1991. After moving to the US with her family in 2000 she joined the Pediatric Drug Development Group in Johnson & Johnson. Subsequently she assumed different roles in the company and was actively involved in the adult and paediatric development programs of several anti-infective drugs for the treatment of e.g. HIV, TB and hepatitis C.

Norbert Bräu is Associate Professor of Medicine at the Mount Sinai School of Medicine, New York, NY, in the Divisions of Infectious Diseases and Liver Diseases. He is also the Medical Director of the Viral Hepatitis Program at the Bronx Veterans Affairs Medical Center. He received his medical degree from the University of Würzburg (Germany) Medical School (1984) and his M.B.A. from the Stern School of Business, New York University (1995). He completed his medical residency at New York Downtown Hospital (1989) and his Infectious Diseases fellowship at NYU Medical Center and the New York VA Medical Center (1992). His research interests include the epidemiology, natural history, and therapy of chronic hepatitis C with and without HIV co-infection as well as hepatocellular carcinoma in HIV-infected patients. He has been an investigator in numerous clinical multi-centre trials for hepatitis C and has published widely in the field. He is the Founder and Chairman of the Liver Cancer in HIV Study Group, a global research consortium. He is a member of the National VA HCV Technical Advisory Committee (HCV TAG) and a member of the VISN 3 Hepatocellular Carcinoma Task Force. He has been invited to speak at national and international meetings and has testified before a subcommittee of the U.S. House of Representatives on hepatitis C care in the VA system.

Karina Butler is a Consultant Paediatrician, Infectious Diseases Specialist and Clinical Professor of Pediatrics at University College Dublin. She is Head of the Rainbow Clinic, the National Centre for HIV Medicine in Children, at Our Lady's Children's Hospital, Dublin. She also serves as member of the Irish National TB and The National Immunisation Advisory Committees.

Tomás Campbell is a Consultant Psychologist and has developed transition and parenting interventions for children/families with HIV to enhance coping. He is interested in the link between stigma, physical health and coping. He is an international board member of the only dedicated adolescent HIV clinic in KwaZuluNatal.

SPEAKER BIOGRAPHIES

Patricia Cane was, until recently, Head of the Antiviral Unit at Public Health England. She also holds honorary professorships at UCL and the University of Warwick. Her research interests include the study of viral evolution both in the context of antiviral drug pressure and the immune response, with particular focus on HIV and respiratory syncytial virus.

Duncan Churchill is a Consultant in GU/HIV Medicine in Brighton. He trained at Oxford University, The Middlesex and St Mary's. He is currently Chair of the BHIVA Treatment Guidelines Writing Group, and has been an author on all previous treatment guidelines since 1997.

Magda Conway has worked in the children's HIV sector for 11 years, working in policy, practice development and consultation with young people. She was the UK Policy Lead for Children and HIV for the National Children's Bureau, during which time she has produced publications such as HIV in Schools (NCB, 2005) and Developing Support Services for Children, Young People and Families Living with HIV (NCB, 2006). As a freelance consultant she has undertaken a number of reviews for charities to support their children and family services; consultations with young people; co-authored Don't Forget the Children (Mediscript, 2009) and currently undertakes work for UNICEF CIS region relating to adolescents living with HIV. Magda works regularly for the Children's HIV Association where she manages their project work.

Fiona Cook trained as a nurse at Leicester Hospitals 1989–1991. She has had a varied career to date, starting out with gynaecology, and surgery. She has worked in hospitals and within the Community in Medicine and Neurology at Sunderland Hospitals. She came to Newcastle as a District Nurse in 2004, and found herself increasingly dealing with patients having treatment for tuberculosis. She became a full time TB nurse in March 2010 and with her colleagues deals with all cases of TB, in both Adult and Paediatrics, in the North of Tyne area.

Annemiek de Ruiter is a Consultant Physician in HIV/GUM at St Thomas' Hospital, London and has managed HIV-positive patients for over 20 years, specialising in the management of pregnant women with HIV. She has published extensively, formed local and national networks, collaborated widely, advised at a national level, lectured nationally and internationally, and led the development of the BHIVA 2012 Pregnancy guidelines. She sits on the Conferences and on the Guidelines BHIVA Subcommittees.

Daniel Douek studied medicine at the Universities of Oxford and London. He then practiced internal medicine, before pursuing a PhD in Immunology at the University of London. Dr Douek was appointed to the NIH Vaccine Research Center in November 2000. His laboratory, the Human Immunology Section, studies the processes that determine the course of human diseases in which the immune system, particularly its T cell arm, plays a central role in their pathogenesis and outcome. He aims to use the knowledge gained to initiate clinical studies of new therapeutic and vaccine approaches. Dr Douek is a widely published author in the field of human immunology and currently the main focus of his lab is both the pathogenesis and immune control of HIV infection. In 2007 Dr Douek was given the World AIDS Day Award and was named as one of the 2012 POZ 100 for his significant contributions to accelerating the end of AIDS.

Rachel Duke has a statutory sector background in public health, working on a range of initiatives to reduce health inequalities associated with TB. She joined TB Alert in April and is working to further strengthen the UK programme through: training and empowering third sector organisations; strengthening the voice of people affected by TB; and establishing multiagency partnerships in high incidence areas. She holds an MSc in Public Health and a BSc in Medical Anthropology.

Simon Edwards has been a Consultant in GU/HIV Medicine at the Mortimer Market Centre and UCLH since 2000. He was Co-Chair of the BHIVA Opportunistic Infection Guideline Writing Group (2011) and is currently a section lead for the writing group for the upcoming BHIVA Treatment guidelines. He is an examiner for the Diploma in HIV. He has previously been on the BHIVA Executive Committee (2005/8) and was a Co-Chair for the BHIVA Standards of Care for People Living with HIV Working Group.

Kevin Fenton is the Public Health England National Director for Health and Wellbeing. In this role he oversees PHE's national prevention programmes, including screening for cancer and other conditions, Health Checks, national health marketing campaigns, public mental health, and a range of wellbeing programmes for infants, youth, adults and older adults. The Health and Wellbeing Directorate also leads PHE's Health Equity portfolio with a range of programmes and activities focused on addressing the social determinants of health, and promoting settings-based approaches to health improvement. Professor Fenton was previously the director of the National Center for HIV/AIDS, Viral Hepatitis, STD, and TB Prevention (NCHHSTP), Centers for Disease Control and Prevention (CDC), a position he held for 7 years from November 2005. He also served as chief of CDC's National Syphilis Elimination Effort and has worked in research, epidemiology, and the prevention of HIV and other STDs since 1995. Previously he was the director of the HIV and STI Department at the United Kingdom's Health Protection Agency. He attended medical school in Jamaica, obtained his master's in public health at the London School of Hygiene and Tropical Medicine, and PhD in Infectious Disease Epidemiology at University College London. He has authored or co-authored more than 250 peer-reviewed scientific articles and policy reports.

Graham Foster is the Professor of Hepatology at Queen Mary's, University of London and a Consultant Hepatologist at Barts Health. He is an experienced clinical scientist with an interest in viral diseases of the liver.

SPEAKER BIOGRAPHIES

Anna Maria Geretti has a special clinical and research interest in HIV, hepatitis B and hepatitis C, with focus on antiviral therapy, drug-resistance, virus genetic diversity, and diagnostics. She contributes to the educational, scientific, and guideline-formulation activities of specialist societies including BHIVA, and is Secretary of EACS and a founding member of the British Society for NanoMedicine. Anna Maria runs capacity-building programmes in resource-limited settings, and enthusiastically shares her expertise to train doctors and scientists.

Giovanni Guaraldi is Assistant Professor of Infectious disease at the University of Modena and Reggio Emilia, Italy. He leads an HIV Metabolic Clinic where 4000 HIV-infected patients have been assessed for non infectious co-morbidities. He is a panel member of the European AIDS Clinical Society (EACS) guidelines.

Charlotte Hopkins is a Consultant Specialist in Sexual Health and HIV Medicine at Whipps Cross University Hospital, Barts Health. She has a passion for clinical leadership and quality improvement in healthcare. She is currently a quality improvement advisor with UCPartners Academic Health Science Network.

Rob Horne is Professor of Behavioural Medicine at the UCL School of Pharmacy. He is a pharmacist with a PhD in Health Psychology. He has over 10 years' experience of clinical pharmacy practice and NHS management with a 15-year programme of research into patients' perspectives of illness and treatment and the psychology of medicines usage. In 2006, he joined the School of Pharmacy where he founded and continues to lead the Centre for Behavioural Medicine. Rob's research focuses on the development of theory-based interventions to support informed choice and optimal adherence to medication and other treatments in chronic illness. His other interests include emotion and health and the placebo/nocebo effect. In 2011 he was designated an NIHR Senior Investigator and last year he was appointed as UCL's academic lead for the Centre for the Advancement of Sustainable Medical Innovation (CASMI), a joint undertaking with the University of Oxford.

Beate Kampmann is Professor of Paediatric Infection and Immunity at Imperial College London, UK and the Scientific Director for Vaccinology Research at The MRC Unit in The Gambia. She trained as a clinician-scientist in Germany, France, UK, US and South Africa and maintains close links with the clinical services for children with infectious diseases at Imperial NHS Healthcare Trust, where she is an active member of the paediatric consultant team. The Kampmann lab has developed a strong international research program with a focus on translational research in childhood infection and immunity, in particular childhood tuberculosis. In The Gambia, she heads the activities under the areas of infant immunology, tuberculosis and molecular diagnostics, and her team works in an integrated fashion between the labs in both the UK and The Gambia. Professor Kampmann is the founder and Chair of the European collaborative network for childhood tuberculosis (ptbnet) and serves on a number of international advisory committees in childhood infection and vaccine development. Her childhood TB research program is addressing the areas of pathophysiology of childhood TB, new vaccines for TB, development, new diagnostic approaches for TB, and programmatic research into management of TB in low- versus high-resource settings. Her work has been supported by funding from The Wellcome Trust, MRC, NIHR, NIH and ESPID. She is the principal investigator of an NIHR-funded multi-centre study into the negative predictive value of IGRA in the management of TB-exposed children in the UK and has contributed to a number of European consensus statements on the use of IGRA in active, latent TB and immunocompromised patients. Professor Kampmann mentors a growing number of international PhD students and has a particular interest in nurturing academic paediatricians in infection and immunity in relation to global health.

Damian Kelly has been involved with the HIV sector for over 20 years. He was Non Executive Director for a regional HIV organisation for 8 years, is a member of the UK Community Advisory Board steering group, a member of the European Community Advisory Board and of the European AIDS Treatment Group. He is also one of the trainers for the new Training Academy in Europe for HIV.

Saye Khoo is Honorary Consultant Physician and Clinical Lead for HIV in Merseyside, and was appointed as Professor in the Institute of Translational Medicine, University of Liverpool in 2009. Research interests are around optimising HIV treatment for individuals and populations, and these encompass studying the pharmacology of sanctuary sites, therapeutic drug monitoring, population pharmacokinetic modelling, pharmacogenetics, drug interactions and medication error. Saye Khoo has contributed to guidelines on management of HIV infection for BHIVA, British Infection Association and WHO, and has worked with Professor David Back to develop the HIV drug interactions website www.hiv-druginteractions.org

Paul Klenerman trained in medicine and infectious diseases in Cambridge, London and Oxford. He studied immunology of virus infections starting with HIV in Oxford with Rodney Phillips and Andrew McMichael, then in Zurich with Rolf Zinkernagel, using model systems such as LCMV, and since 2000, with a Wellcome Trust fellowship, focusing on HCV back in Oxford. His lab is interested in immune control and immune escape of pathogens, including new vaccine approaches, and novel T cell subsets in the liver and gut.

Tarryn Klotnick started her career in paediatric social work at the Royal Children's Hospital in Melbourne. Almost 5 years ago she moved to London, where she has continued her clinical social work experience at Great Ormond Street Hospital for Children. She continues to work in an inter-disciplinary environment and is encouraged by this broad approach in considering the needs of HIV-positive children and young people.

SPEAKER BIOGRAPHIES

Ranjababu Kulasegaram (Babu) is a Consultant in HIV/GU Medicine at St Thomas' Hospital and leads the HIV Treatment Advice Clinic with special interests in HIV/Hepatitis, Haemophilia/HIV infection, HIV/Neurocognitive function and HIV inpatient management. He is committed to enhancing BHIVA's educational activities, through his involvement as Vice chair of the BHIVA Educational and Scientific subcommittee, member of Conferences Subcommittee and E-Learning Working Group. Babu is also Chair of the BHIVA Hepatitis Society and is an examiner for the Diploma in HIV Medicine.

Karine Lacombe is an Associate Professor in the Infectious and Tropical Diseases Department of Saint-Antoine Hospital, Paris. She teaches infectious diseases and public health in numerous universities and schools around France, sub-Saharan Africa and the Asian continent. She is involved in the clinical and therapeutical management of patients with HIV and/or viral hepatitis at the inpatient and outpatient clinics of the hospital. As part of her academic work, she developed clinical research in Europe, sub-Saharan Africa and Asia on the issues of HIV-chronic hepatitis B and C, as well as co-morbidities associated with the use of antiretrovirals. She is the main author of over 70 peer-reviewed publications and book chapters on these subjects. She has an MPH in public health and evaluation of health actions and a PhD in epidemiology obtained at the Pierre et Marie Curie University of Sciences, in Paris.

Sebastian Lucas is a committed infectious disease specialist pathologist, and started work on HIV clinical pathology in the mid-1980s whilst at UCH and Middlesex Hospitals. That led to much HIV autopsy work in London and West Africa, which buttressed his appointment to the Chair of Pathology at Guy's and St Thomas' Medical School (now part of KCL) in 1995. Although he formally retired in 2012, he continues the HIV interest, underlining the importance of good pathology diagnostics, appropriately investigated deaths, education, and clinico-pathological correlation to improve patient care.

Jens Lundgren established CHIP in 1994, and he collaborates with 270 different research institutions in 35 countries. He established the D:A:D study in 1999, and the EuroSIDA cohort study. Since 1999, CHIP has been one of four international coordinating centres in the global NIH research network INSIGHT. Professor Lundgren serves as the Chair of the Scientific Steering Committee and Co-chair of the global START trial. He translated research experience from immune incompetence and viral infections in HIV and developed the MATCH programme focusing on reducing risk from infectious complications in transplant recipients, now linked to German colleagues established to export concept. He is a consultant to WHO (guidelines on HIV and hepatitis management); founded the HIV in Europe initiative (issued indicator disease guided testing guidelines); and serves as chair of the European AIDS Clinical Society guidelines on management of HIV co-morbidity.

Nicola Mackie is a Consultant Physician and Honorary Senior Lecturer in HIV/GUM at Imperial College Healthcare NHS Trust. She is based at St Mary's Hospital where she is the Lead for HIV. Her research was in the field of HIV-1 drug resistance and she runs the weekly Virtual Clinic at ICHNT and is a steering committee member of the UK MRC HIV Resistance Database Group.

Ceppie Merry is an Associate Professor in Global Health at Trinity College Dublin and Northwestern University Chicago, and Associate Professor in Medicine at Makerere University, Uganda. She has set up a pharmacology clinical trial unit and drug information centre at the Infectious Disease Institute, Kampala, Uganda.

Rob Miller is Reader in Clinical Infection at University College London (UCL), Honorary Professor at the London School of Hygiene and Tropical Medicine, and Honorary Consultant at Camden Provider Services NHS Trust and UCL Hospitals NHS Trust. His research interests relate to the effects of HIV on innate immunity and the respiratory complications of HIV infection, particularly *Pneumocystis jirovecii* pneumonia and tuberculosis.

Mark Nelson is a Consultant Physician at the Chelsea and Westminster Hospital, London. Dr Nelson trained at Jesus College, Cambridge and Westminster Hospital Medical School from where he qualified in 1986. He was appointed Consultant Physician at this hospital in 1991 where he is presently the Lead for HIV Inpatient and Day Case Care and is a Reader at Imperial College Medical School where he is also the Deputy Senior Tutor. Since that time he has built a large HIV practice with a special interest in HIV inpatient care, co-infection with hepatitis B and C and the clinical utility of new antiretroviral agents. He has published over 500 papers on HIV and hepatitis. Dr Nelson sits on the Executive Committee of the British HIV Association where he is co-chair of the writing groups for opportunistic infections and for hepatitis C. He is a member of the writing groups for malignancy and for HIV transmission. He was Chair of the BHIVA Hepatitis Society and is Chair of the BHIVA Education and Scientific Subcommittee. He is a trustee of several charities associated with HIV including the International Association of Physicians in AIDS care (IAPAC). He is now devoting most of his charitable time to GREENSHOTS where he is establishing HIV treatment networks in Burma and Vietnam. He has been awarded a visiting professorship at the Aga Khan Hospital, Nairobi, Kenya and most recently the certificate of merit by the government of Vietnam.

James O'Beirne qualified from King's College Hospital in 1995. He underwent training in hepatology and liver transplantation at the Royal Free and King's College Hospitals. He was appointed as Consultant Hepatologist and Honorary Senior Lecturer at the Royal Free, University College in 2007. His current research and clinical interests include immunosuppression, liver transplantation, adrenal function in cirrhosis and non-cirrhotic portal hypertension in HIV infection. At the Royal Free he leads on the post-transplant management of patients with HIV infection and shares the care of patients undergoing post-transplant hepatitis C with Dr Bhagani.

SPEAKER BIOGRAPHIES

Jenny Petrak is a Consultant Clinical Psychologist with over 23 years of professional experience in delivery of psychological services in HIV and Sexual Health in NHS teaching hospitals. She is currently working in East London at the Homerton University Hospital. Dr Petrak is published widely in international journals and presents at international conferences on a wide range of topics within the field of HIV prevention, care and treatment, mental and physical health care, sexual trauma, and sexology. She has also worked as an independent consultant for a number of international organisations including the World Health Organization, UNICEF, International HIV/AIDS Alliance, Family Health International, and VSO. This has included extensive facilitation, research, teaching, training and writing experience. Areas of focus include, for example, HIV treatment, care and prevention, adherence interventions, mental health, motivational interviewing, community engagement and team management.

Ailsa Pickering is a Specialist Nurse based at the newly opened Great North Children's Hospital in Newcastle Upon Tyne. She has worked in the field of children's HIV medicine for the past 8 years and covers the northern region for paediatric HIV care. She is currently a member of the CHIVA Executive Committee as the Nurse Representative and is also on the Clinical Guidelines Subcommittee.

John Quin has been a Consultant Physician in Diabetes and Endocrinology based at the Royal Sussex County Hospital, Brighton since 1994. He runs a joint endocrine/HIV clinic with Dr Debbie Williams.

Keith Radcliffe has been a Consultant and Clinical Service Lead in Sexual Health and HIV Medicine at the University Hospitals Birmingham since 1991. He is a member of the Department of Health's Expert Advisory Group on AIDS and a Past President of the British Association for Sexual Health and HIV (BASHH).

Michael Rayment is currently a Locum Consultant in Sexual Health and HIV Medicine at Homerton University Hospital. His main research interest is the evaluation of strategies to reduce undiagnosed and late-diagnosed HIV infection in the UK, and he is a keen advocate of HIV partner notification as a highly effective method.

Iain Reeves is Lead Consultant for HIV at the Homerton University Hospital.

Andrew Rice is Professor of Pain Research at Imperial College London and Honorary Consultant in Pain Medicine at Chelsea and Westminster Hospital. He undertakes research and clinical practice in neuropathic pain, focusing on post herpetic neuralgia, peripheral nerve injury, leprosy and HIV neuropathy. He has written more than 100 scientific publications (H index 30), sits on the editorial boards of Pain and PLoS-Medicine and is lead editor of Textbook of Clinical Pain Management. He is Chair of the IASP Special Interest Group on Neuropathic Pain (www.neupsig.org) and Administrative Director/Principal Investigator of the Wellcome Trust-funded London Pain Consortium (www.lpc.ac.uk). He is a work package leader for the EU Innovative Medicines Initiative "Europain" (www.imieuropain.org). He was the Michael Cousins lecturer at the Australian and New Zealand College of Anaesthetists (2009) and Covino Lecturer at Harvard University (2008).

Caroline Sabin is Professor of Medical Statistics and Epidemiology at UCL. Caroline has worked for many years on the analysis of large observational HIV databases with a particular interest in raising awareness of the biases inherent in these databases. She is the principal investigator of the UK CHIC Study, is the principal statistician on the D:A:D Study, and works with many other research groups in the UK and elsewhere. Caroline is a member of the scientific leadership group for the EU-funded EuroCoord Network of Excellence.

Chris Sandford last year engaged 1500 patients in one-to-one peer-support sessions, motivational workshops, educational forums and newly diagnosed courses. Involvement includes: BHIVA, BASHH, National Aids Trust, NAM, UCL Partnership, London School of Hygiene and Tropical Medicine, New York University, MEDFASH and the Royal College of GPs. He is a contributor to the new edition of The ABC of HIV, a member of the London Specialised Commissioning Group, the working parties for the Standards for Psychological Support for PLWH and the BHIVA Standards.

James Seddon is a Clinical Lecturer in Paediatric Infectious Diseases at Imperial College London. His major area of research is that of children with tuberculosis, specifically drug-resistant forms and his studies include the epidemiology, diagnosis and treatment of this condition.

Fiona Shackley has been a Consultant Paediatrician since 2002 in the Immunology, Infectious Disease and Allergy Service at Sheffield Children's Hospital. She completed infectious disease and immunology training in Glasgow, Oxford and Toronto.

Peter Sharott Peter Sharott was an NHS hospital pharmacist with over 40 years' experience, holding senior pharmacy manager positions at trust and regional levels. Until 2008, he was Director of Specialist Pharmacy Services across London and South East England. Peter has a specialist interest in strategic medicines procurement and was Chairman of the national Pharmaceutical Market Support Group for 13 years. He is currently a part-time Pharmaceutical Adviser to NHS England (London Region), a co-opted member of the HIV Clinical Reference Group and Co-chairman of its Drugs Sub-Group.

SPEAKER BIOGRAPHIES

Tom Solomon studied medicine in Oxford, before working on brain infections in Vietnam, with a Wellcome Trust Training Fellowship. He then became Clinical Lecturer at the University of Liverpool, and was awarded a Wellcome Trust Career Development Fellowship, with two years in the USA. Returning to Liverpool, he became Senior Lecturer, MRC Senior Clinical Fellow, then Chair of Neurological Science, and Director of the Liverpool Institute of Infection and Global Health. His group studies brain infections of major global importance with collaborations in Asia, Africa, the UK and the US, closely working with WHO. The group has more than £8m in funding, principally from the MRC, Wellcome Trust, Gates Foundation and NIHR.

Mark Thursz is Professor of Hepatology at Imperial College where he is Head of the Section of Hepatology and Gastroenterology. He is also Lead Clinician and Consultant in Hepatology at St Mary's Hospital, London. His clinical interests are in viral hepatitis, alcoholic and fatty liver disease. He is currently interested in developing programmes for treatment of chronic hepatitis B infection in resource-poor settings to reduce the risk of hepatocellular carcinoma. Professor Thursz' research interests are focused on the natural history of viral hepatitis and fatty liver disease and the factors which determine chronic infection and progressive liver disease. He has a special interest in the genetic determinants of disease outcomes using genetic association and genome-wide scanning to identify causative variants. Professor Thursz is chief investigator on two multi-centre trials: The Warfarin Anticoagulation for Liver Fibrosis in Patients Transplanted for Hepatitis C (WAFIT-C) trial, and the Steroids or Pentoxifylline for Alcoholic Hepatitis (STOPAH) trial. Professor Thursz is a former secretary of the British Association for Study of the Liver (BASL) and has recently completed his term as Secretary-General of the European Association for Study of the Liver.

Anna Turkova worked for 4 years in paediatric infectious diseases in Russia. She completed Higher Specialist Training in Paediatrics in the UK in 2010. For two years she worked in Paediatric Infectious Diseases, Imperial College Healthcare Trust, London. From September 2012 she was appointed PENTA Medical Consultant for Eastern Europe. She has been a member of CHIVA since 2006.

Philippe Van de Perre is Professor of Medicine and Head of the Department of Bacteriology-Virology at Montpellier University Teaching Hospital, France.

Sam Walters is a Consultant Paediatrician and an Honorary Senior Lecturer in Paediatric Infectious Diseases at Imperial College Healthcare NHS Trust, based at St Mary's Hospital, London. He obtained his medical degree at Cambridge University and trained in Paediatric Infectious Diseases in the UK and Papua New Guinea. He has worked in the area of paediatric HIV infection since 1989. He also has a specific interest in paediatric tuberculosis. Current research activities include clinical trials of antiretroviral drugs for children and diagnosis of tuberculosis.

Steve Welch is a Consultant in Paediatric HIV and Infectious Diseases at Heartlands Hospital, Birmingham and has been Chair of CHIVA since 2011. Dr Welch is a member of the PENTA Steering Committee, and is jointly in charge of PENTA's training activities. His current priority is securing the future of children's HIV services under the new NHS commissioning arrangements.

Ed Wilkins is a Consultant in Infectious Diseases and Director of the HIV Research Unit at North Manchester General Hospital. Prior to taking up his current position, he trained in Infectious Diseases in London and Liverpool, Tropical Medicine in Africa, and Medical Microbiology with the Health Protection Agency. He has been involved with HIV patient care and research since 1984 with interests in antiretroviral toxicity and hepatitis co-infection. He is heavily involved in clinical trials as well as many executive and advisory national committees including BHIVA.

Debbie Williams is a Consultant in HIV/GU Medicine at Brighton and Sussex University Hospitals. Her clinical interests include developing joint services to manage HIV patients with co-morbidities. She has run a joint renal clinic since 2009 and has recently set up a joint endocrine clinic.

Based on ECHO and THRIVE 48-week data, EDURANT
is licensed for patients new to ARV therapy with
a viral load less than 100,000 copies/mL

It's about the fit.

INDICATION: In combination with other antiretroviral medicinal products (ARVs), EDURANT is indicated for the treatment of human immunodeficiency virus type 1 (HIV-1) infection in antiretroviral treatment-naïve adult patients with a viral load $\leq 100,000$ HIV-1 RNA copies/mL. Please see Summary of Product Characteristics.

 **EDURANT**
rilpivirine
ABOUT THE FIT

PRESCRIBING INFORMATION

EDURANT 25mg film-coated tablet

ACTIVE INGREDIENT: 25mg of rilpivirine (as rilpivirine hydrochloride). Please refer to Summary of Product Characteristics (SmPC) before prescribing. **INDICATIONS:** In combination with other antiretroviral medicinal products, is indicated for the treatment of human immunodeficiency virus type 1 (HIV-1) infection in antiretroviral treatment-naïve adult patients with a viral load $\leq 100,000$ HIV-1 RNA copies/mL. **DOSAGE AND ADMINISTRATION:** Therapy should be initiated by a physician experienced in the management of HIV infection. **Adults:** One 25mg tablet taken orally once daily with a meal. Dose adjustment required in patients receiving rifabutin, dose increased to 50mg once daily. Decrease dose to 25mg once daily when rifabutin is stopped. **Older people:** No dose adjustment required. Limited information available. Caution should be exercised. **Children:** No data available. **Renal impairment:** Caution should be exercised in patients with severe renal impairment or end-stage renal disease. **Hepatic impairment:** Caution should be exercised in patients with moderate hepatic impairment. EDURANT is not recommended in patients with severe hepatic impairment. **CONTRAINDICATIONS:** Hypersensitivity to active substance or any excipients. EDURANT should not be co-administered with the anticonvulsants (carbamazepine, oxcarbazepine, phenobarbital, phenytoin) antimycobacterials (rifampicin, rifapentine) proton pump inhibitors (e.g. omeprazole, esomeprazole, lansoprazole, pantoprazole, rabeprazole); systemic dexamethasone (except as a single dose treatment) and St. John's wort. **SPECIAL WARNINGS AND PRECAUTIONS:** Advise patients that current antiretroviral therapy does not cure HIV and precautions should be taken to avoid transmission. **Virological failure and development of resistance:** EDURANT has not been evaluated in patients with previous virologic failure to any other antiretroviral. As with other antiretroviral medicinal products, resistance testing should guide the use of EDURANT. **Cardiovascular:** Use with caution when co-administered with medicinal products with a known risk of Torsade de Pointes. **Immune reconstitution syndrome (IRS):** Inflammatory reaction to asymptomatic or residual opportunistic pathogens may arise and cause serious clinical conditions, or

aggravation of symptoms in patients with severe immune deficiency at start of combination antiretroviral therapy (CART). Autoimmune disorders have been reported to occur in the setting of IRS. **Fat redistribution:** CART is associated with lipodystrophy and metabolic abnormalities. Contains lactose. Patients with galactose intolerance, Lapp lactase deficiency or glucose galactose malabsorption should not take this medicine. **SIDE EFFECTS: Very common:** increased total or LDL cholesterol (fasted), insomnia, headache, dizziness, nausea, increased pancreatic amylase or transaminases. **Common:** decreased white blood cell count, decreased haemoglobin, decreased platelet count, decreased appetite, increased triglycerides (fasted), abnormal dreams, depression, sleep disorders, depressed mood, somnolence, abdominal pain, vomiting, increased lipase, abdominal discomfort, dry mouth, increased bilirubin, rash, fatigue. **Uncommon:** Immune reactivation syndrome. **PREGNANCY:** EDURANT should not be used during pregnancy unless clearly needed. Studies in animals have shown no reproductive toxicity. **LACTATION:** Mothers should not breastfeed if they are receiving EDURANT due to possible HIV transmission and potential adverse reactions. **FERTILITY:** No human data available. Animal studies showed no clinically relevant effects. **INTERACTIONS:** Use with caution when co-administering EDURANT with other medicinal products that induce or inhibit CYP3A and those that increase gastric pH. EDURANT may increase the exposure of drugs transported by P-glycoprotein that are more sensitive to intestinal P-gp inhibition e.g. dabigatran etexilate. Careful patient monitoring advised when starting or ending concomitant treatment with metformin. Rilpivirine inhibits the secretion of creatinine. Where possible, alternatives such as azithromycin should be considered in place of clarithromycin and erythromycin. Co administration with rifabutin, increase EDURANT dose to 50 mg once daily, when rifabutin is stopped, decrease EDURANT dose to 25 mg once daily. Only H2 receptor antagonists that can be dosed once daily, using a strict dosing schedule, should be used, take H2 receptor antagonist 12 hours before or 4 hours after EDURANT. Antacids should be used with caution and only, either at least 2 hours before or 4 hours after EDURANT. Clinical monitoring recommended with methadone, as maintenance

therapy may need to be adjusted. **LEGAL CATEGORY:** POM. **PRESENTATIONS, PACK SIZES, PRODUCT LICENCE NUMBERS & BASIC NHS COSTS:** 25mg tablets; 1 bottle containing 30 tablets, EU/1/11/736/001; £200.27. **MARKETING AUTHORISATION HOLDER:** Janssen-Cilag International NV, Turnhoutseweg 30, B-2340 Beerse, Belgium. **FURTHER INFORMATION AVAILABLE FROM:** Janssen-Cilag Ltd, 50-100 Holmers Farm Way, High Wycombe, Buckinghamshire, HP12 4EG, UK. © 2013 Janssen-Cilag Ltd. Prescribing information last revised: 09/2013. PIVER09/2013

This medicinal product is subject to additional monitoring and it is therefore important to report any suspected adverse reactions related to this medicinal product. This will allow quick identification of new safety information. Healthcare professionals are asked to report any suspected adverse reactions via the Yellow Card Scheme at www.mhra.gov.uk/yellowcard. Adverse events should also be reported to Janssen-Cilag Ltd on 01494 567447.

PHGB/EDU/1013/0006
Date of preparation: October 2013

Janssen
PHARMACEUTICAL COMPANIES
OF Johnson & Johnson